

GATEWAY Property File Creation  
Oracle FLEXCUBE Universal Banking  
Release 14.6.0.0.0  
Part No. F56608-01  
[May] [2022]



---

# Table of Contents

- 1. CREATING PROPERTY FILE FOR GATEWAY APPLICATIONS ..... 1-1
  - 1.1 INTRODUCTION ..... 1-1
  - 1.2 CREATING PROPERTY FILES ..... 1-1
    - 1.2.1 Gateway EJB Application ..... 1-3
    - 1.2.2 Gateway MDB Application ..... 1-13
    - 1.2.3 Gateway HTTP Servlet Application ..... 1-22
    - 1.2.4 Gateway Web Service Application ..... 1-28
    - 1.2.5 REST Services Application ..... 1-39

# 1. Creating Property File for Gateway Applications

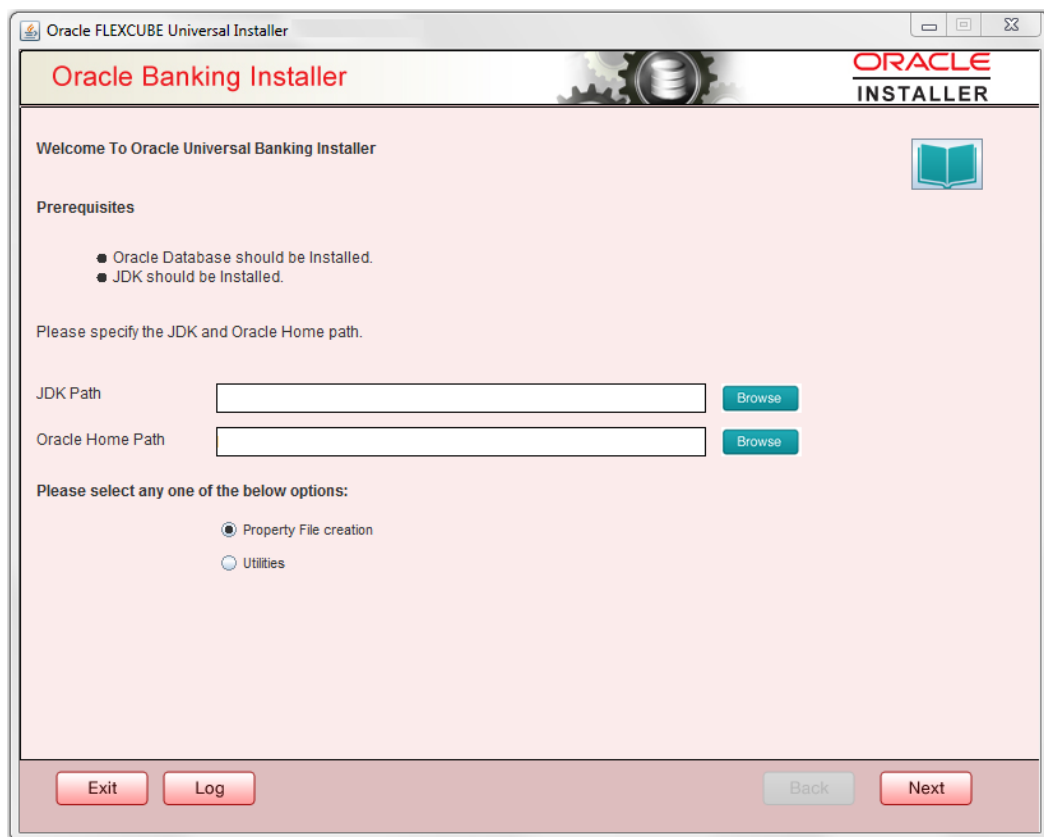
## 1.1 Introduction

This chapter explains the steps to create the property file for the gateway components viz. Enterprise Java Bean (EJB), Message Driven Beans (MDB), Web Services and Servlet.

## 1.2 Creating Property Files

Follow the steps given below:

1. Start Oracle FLEXCUBE Universal Banking Solutions Installer - FCUBSInstaller.bat from INSTALLER\SOFT\GUI. Prerequisites screen is displayed.



2. Select component as 'Gateway' and click 'Next button'.

Oracle FLEXCUBE Universal Installer 12.5.0.0.0

## Oracle Banking Installer

**ORACLE**  
INSTALLER

**Select one of the Components**

Load Existing Property File

INFRA   
 Scheduler   
 Gateway   
 Switch Interface Installation

**Select Oracle Product Processors**

Oracle FLEXCUBE Universal Banking  
 Oracle FLEXCUBE Enterprise Limits and Collateral Management (CO-DEPLOY)  
 Oracle Banking Payments  
 Oracle Banking Corporate Lending       Open Development Tool  
 Oracle Banking Treasury                       Oracle FLEXCUBE Universal Banking for JAPAN  
 Oracle Banking Trade Finance

**Select Plugins to be Installed**

Host Address       Origination     Scheduler   

Reports       SIANET Adapter

DMS       Insulation     External Adapter required

3. Enter the Required details in the Screen.

Specify the EAR name, valid Application Server Path, Source and EAR destination path and click 'Next' button.

Oracle FLEXCUBE Universal Installer 12.5.0.0.0

**Oracle Banking Installer** **ORACLE INSTALLER**

**Provide Environment details.**

EAR Name

File Separator Style

Application Server

OBMA PP Installed

Application Server Path

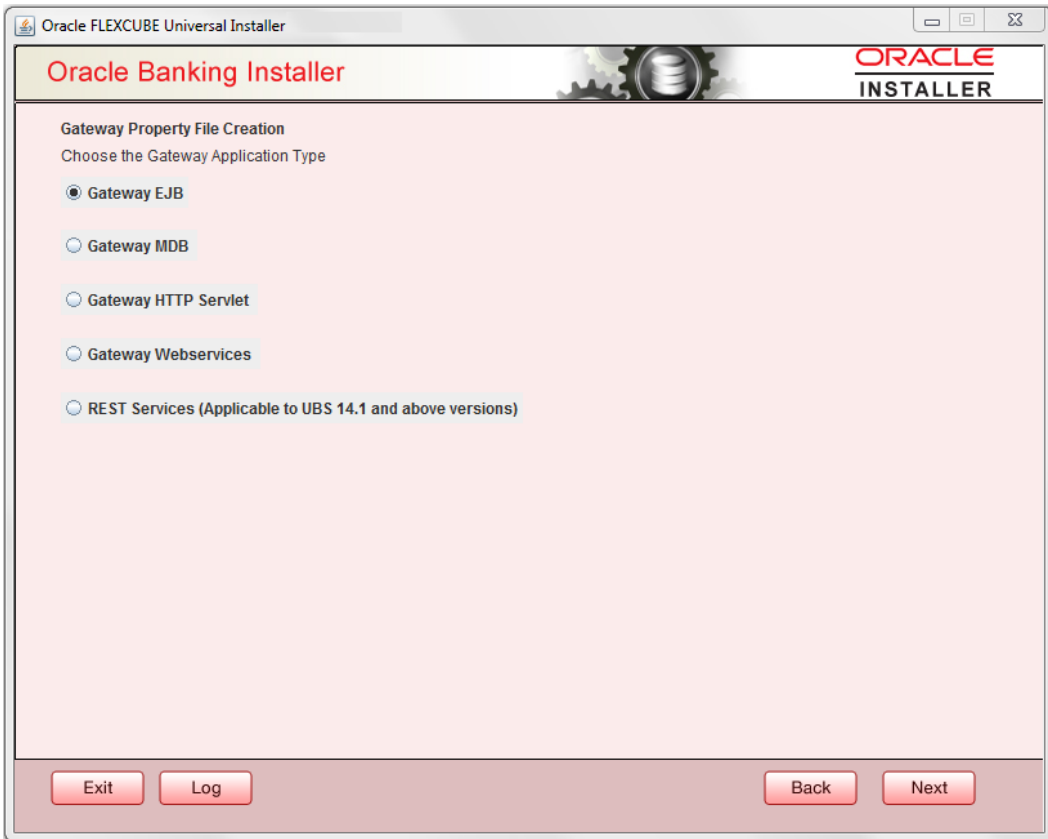
Source Path

Ear Destination Path

Cookie-Name (JSESSION\_ID)

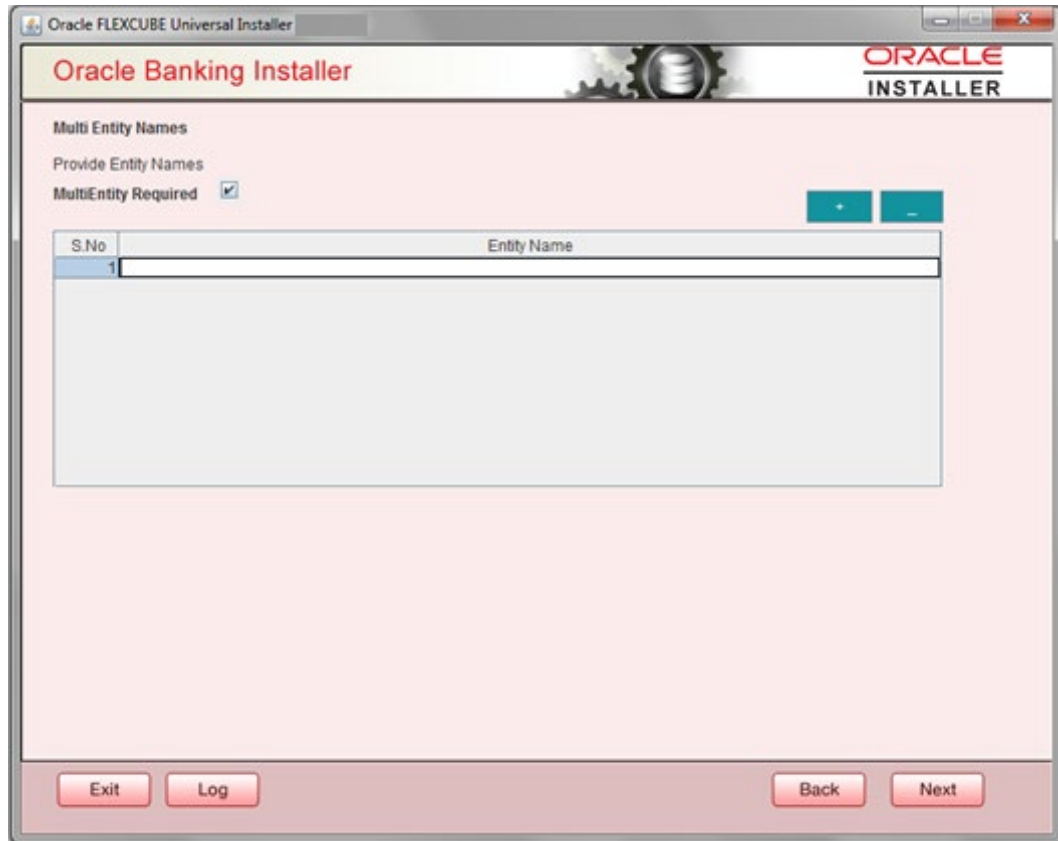
### 1.2.1 Gateway EJB Application

1. Select 'Gateway EJB' as the application type as shown in the below Screen.



2. Click 'Next'. The following screen is displayed:

The installer displays the 'Multi Entity' screen.



### **MultiEntity Required**

Select the multi entity check box for enabling the multi entity deployment.

After selecting the multi entity option '+', '-' buttons will be enabled for capturing the entity Name

#### **+ Button:**

New row will be added for capturing new entity name.

#### **- Button:**

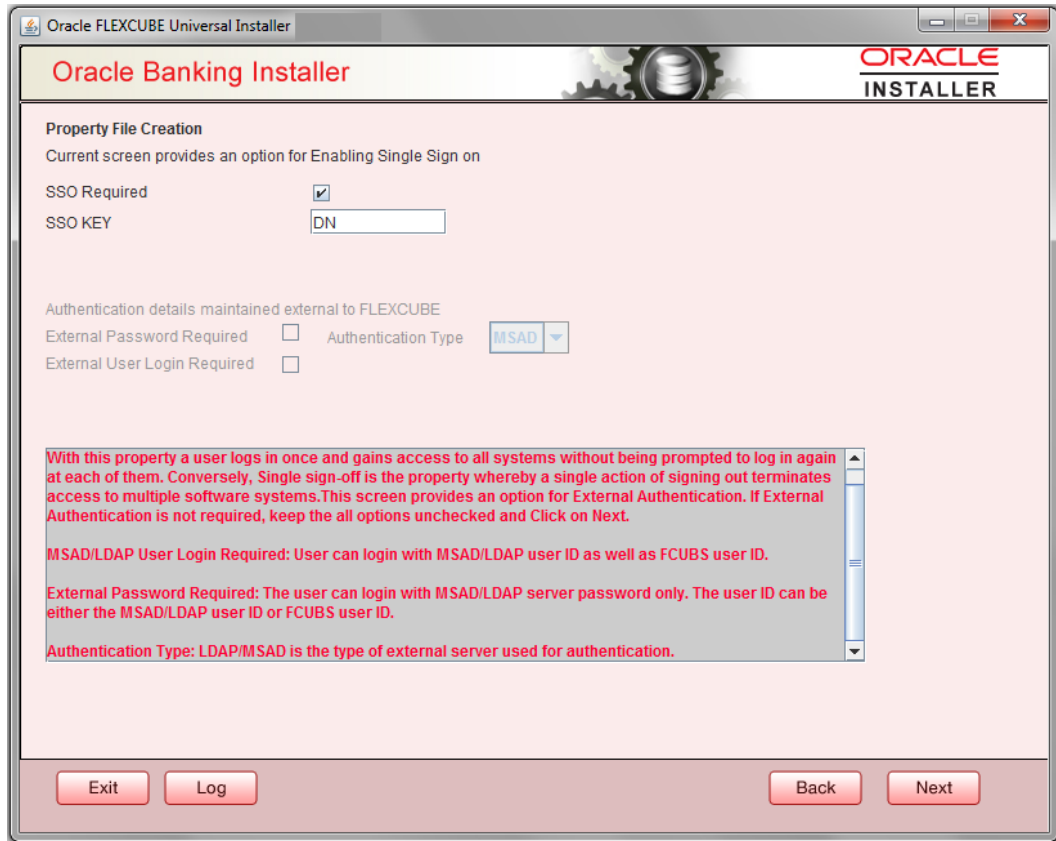
Select the entity name and click – button, deletion of existing entity name will be done

#### **Entity Name:**

Enter the entity name as single word

For example: ENTITY1

4. Click 'Next'. The following screen is displayed:



5. Specify the following details.

### SSO Required

Check this box to enable single sign-on (SSO). If you check this box, you need to specify the SSO Key.

### SSO Key


Specify the SSO key. If you have checked the box 'SSO Required', it is mandatory to specify the SSO key.

If you have checked the box 'SSO Required', then the Installer will skip the following two screens and will directly navigate to the SSL screen shown below in this manual.

If you have not checked the box 'SSO Required', then click 'Next'. The following screen is displayed.

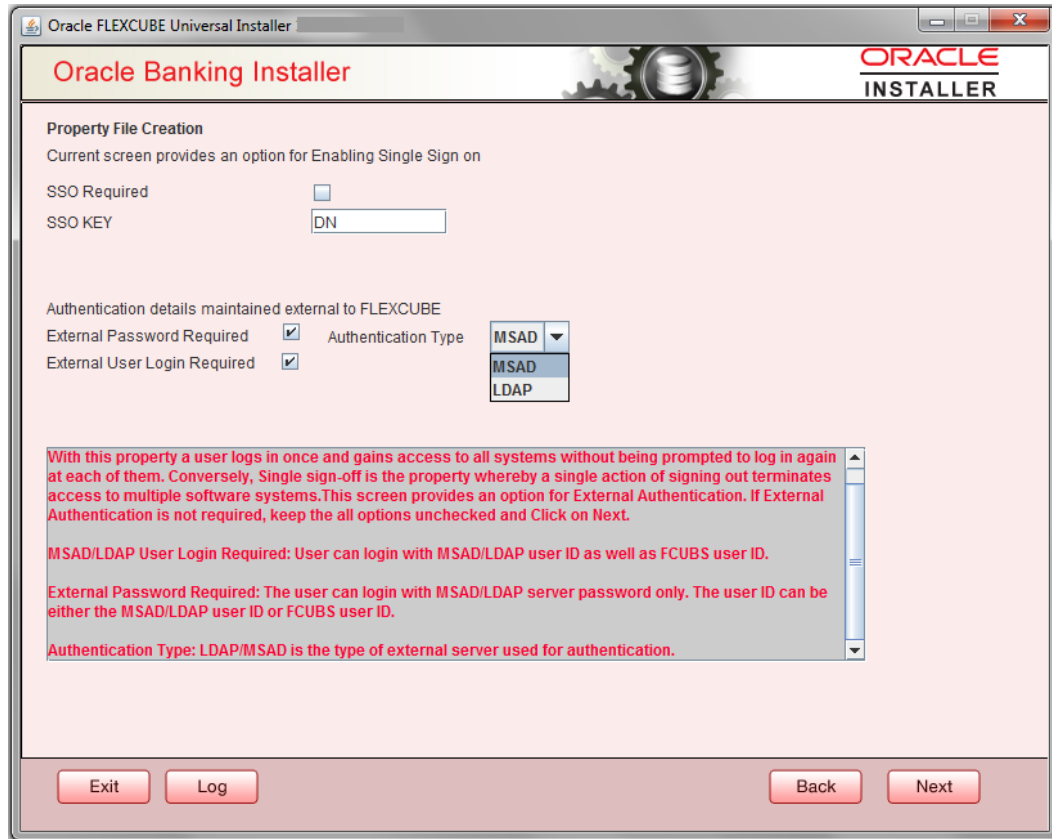
### External User Login Required

Check this box to enable user login using MSAD/LDAP user Id.

 If you check this box, the user can login with MSAD/LDAP server user Id as well as FCUBS user Id. If you do not check this box, the user can login using FCUBS user Id only.


(Note-MSAD: Microsoft Active Directory, LDAP: Lightweight Directory Access Protocol)





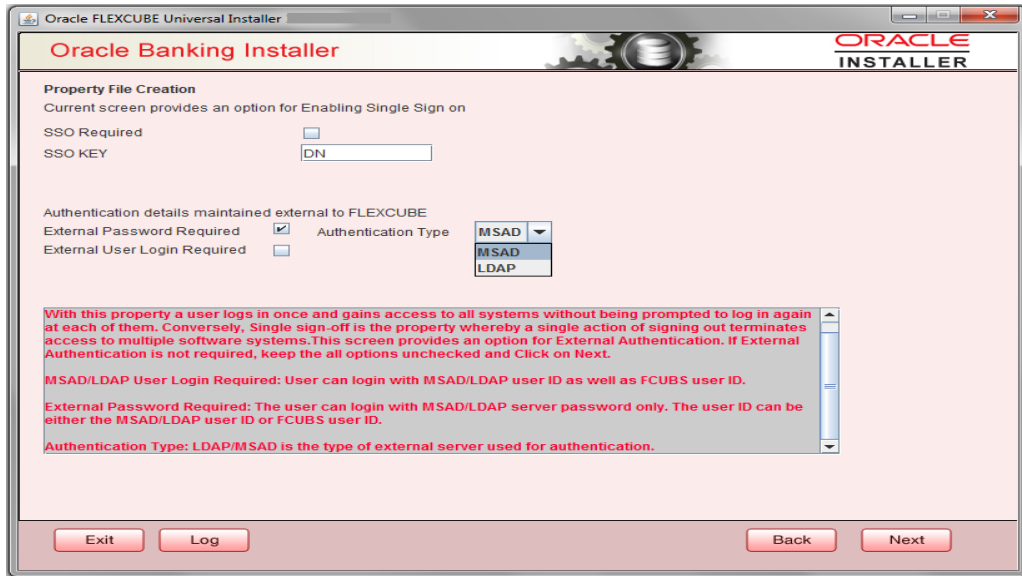
## External Password Required

Check this box to allow user login using MSAD/LDAP password irrespective of the user Id.

 If you check this box, the user can login using MSAD/LDAP server password only. The user Id can be one of the following:

- MSAD/LDAP user Id
- FCUBS user Id

If you do not check this box, then the installer skips the following screen and directly navigates to the Modifying Gateway Properties screen.



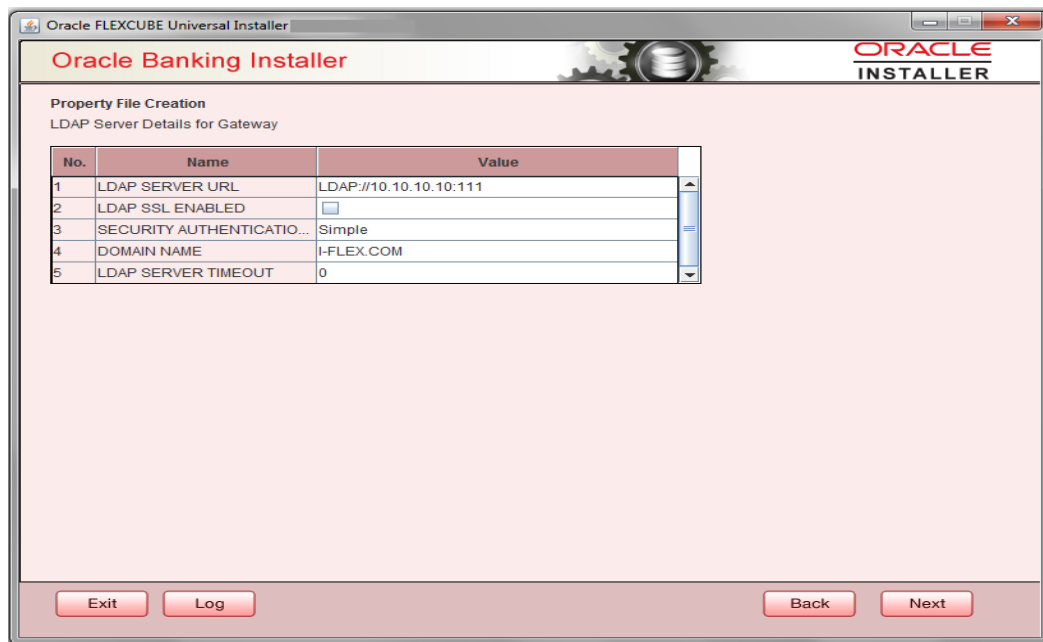
### Authentication Type

Select the authentication type. This is the type of external server that is used. You can select one of the following options:

- MSAD (Microsoft Active Directory)
- LDAP (Lightweight Directory Access Protocol)

The default option is MSAD; however, you can change it

6. If you check the box, then the installer navigates to the following screen on clicking 'Next' button.



7. Specify the following LDAP server details.

### **LDAP Server URL**

Specify the URL to access the LDAP server where the external user ID and password are maintained.

### **LDAP SSL Enabled**

Check this box if the LDAP server is SSL enabled. If you check this box, then you need to specify the SSL port also in the field LDAP SERVER URL.

By default, this check box is unchecked. However, you can change this.

### **Security Authentication Type**

Depending on the authentication mechanism supported by the LDAP server, select one of the following:

- simple
- strong



Note the following:

- Different servers support different authentication mechanisms.
- By default, the security authentication type is 'Simple'; however, you can change this.

### **Domain Name**

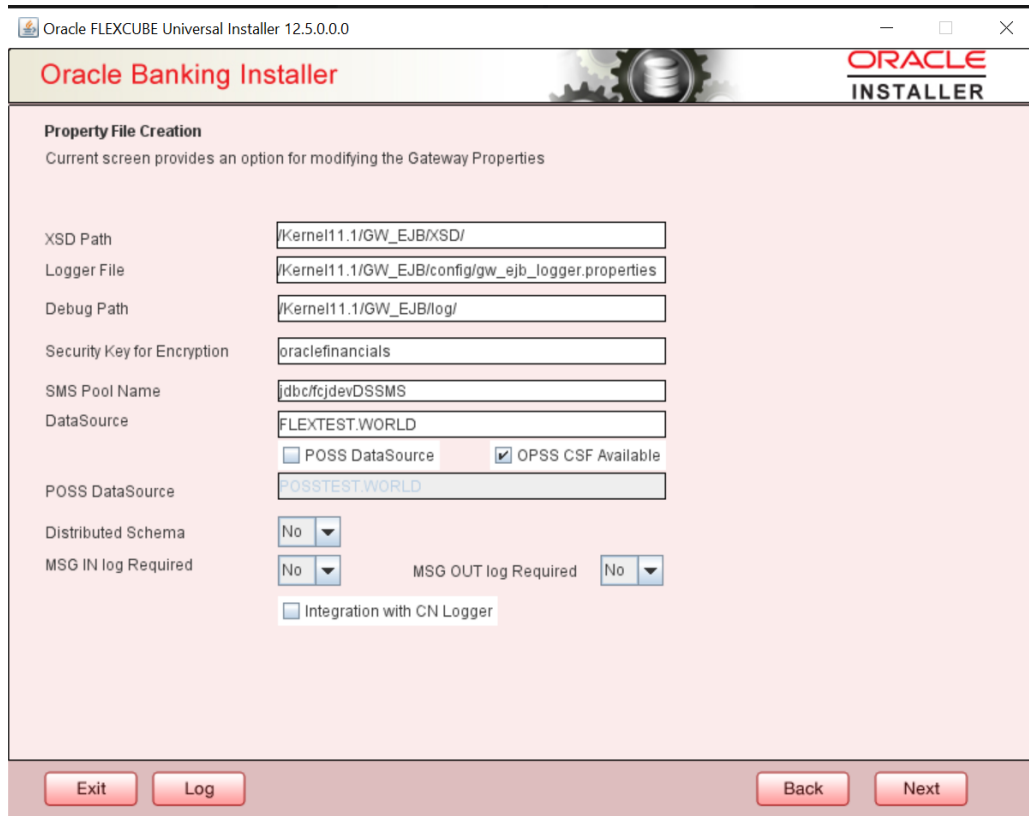
Specify the domain name.

### **LDAP Server Timeout**

Specify the LDAP server timeout in milliseconds. This must be a positive integer value. For example you can specify 1000, 10000 or 5000. If it is zero or less, it indicates that no read timeout is specified. Then the wait for the response infinite until it is received.

By default, the LDAP server timeout is zero; however, you can change this.

8. Click 'Next'. The following screen is displayed:



9. Specify the following details.

### XSD Path

Specify the path to the XSD file. File name is not required. File separator must be '/'. There must be a '/' at the end. All the relevant XSD files must be manually copied to this location.

E.g.:

For Windows: D:\Kernel11.1\GW\_EJB\XSD\

For Linux: /Kernel11.1/GW\_EJB/XSD/

### Logger File

Specify the path to the 'gw\_ejb\_logger.properties' file with the file name. The file must be manually copied to the specified location.

E.g.:

For windows: D:\Kernel11.1\GW\_EJB\config\gw\_ejb\_logger.properties

For Linux: /Kernel11.1/GW\_EJB/config/gw\_ejb\_logger.properties

### Debug Path

Specify the path to the folder where the application creates the logs. There must be a '/' at the end. You need to manually create the specified folder structure.

E.g.:

For windows: D:\Kernel11.1\GW\_EJB\log\

For Linux: /Kernel11.1/GW\_EJB/log/

### **Security Key for Encryption**

Specify the security key for the Encryption, here in this case it is 'oraclefinancials'.

### **SMS Pool Name**

Specify SMS Pool Name, here in this case it is 'jdbc/fcjdevDSSMS'.

### **DataSource**

The JDBC data source is an object bound to JNDI tree and provides database connectivity through a pool of JDBC connections.

### **POSS Datasource**

Check this box if POSS is required. If you check this box, you need to specify the POSS Datasource Name in the field below this.

### **OPSS CSF Available**

Indicate whether OPSS-CSF is installed or not.



Please choose this only if Oracle Platform Security Services - Credential Store Framework (CSF) is installed as per the guidelines in the pre-requisite document. It is recommended that you install CSF for safeguarding application specific security credentials.

### **Distributed Schema**

If the schema is distributed, select 'Yes'.

If the schema is not distributed, select 'No'.

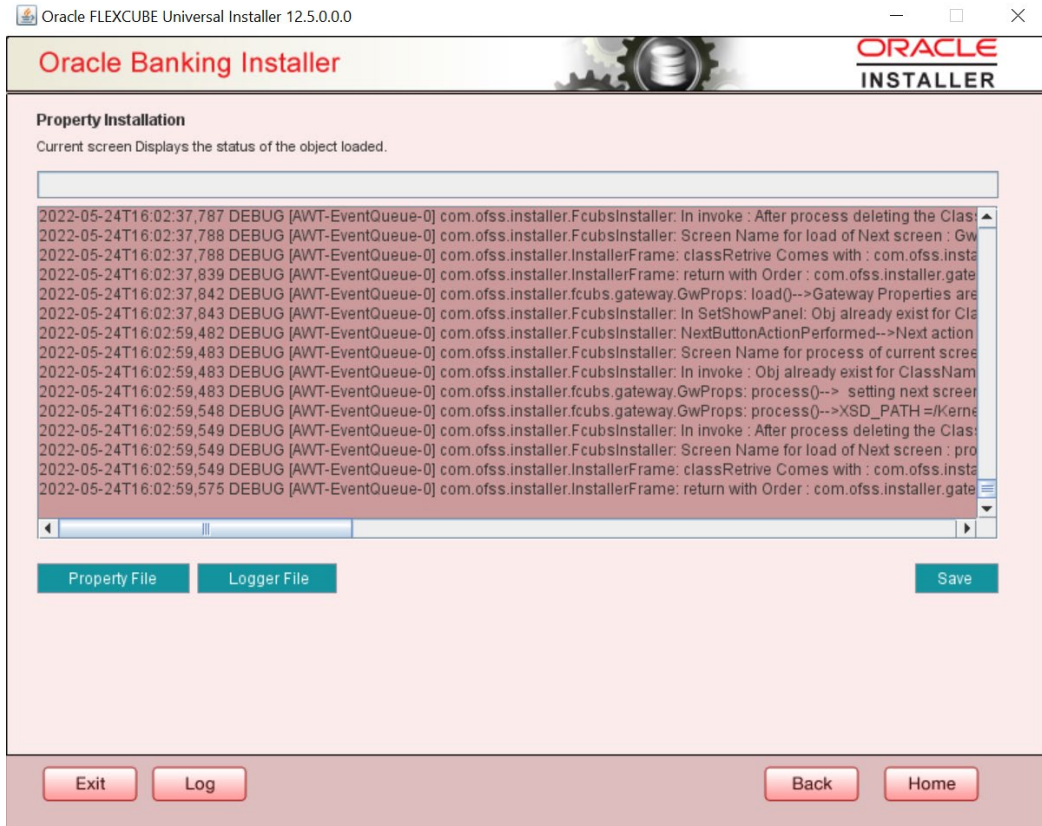
### **MSG IN LOG Required**

Choose Yes/No from drop down box

### **MSG OUT LOG Required**

Choose Yes/No from drop down box.

10. Click 'Next'. The following screen is displayed.



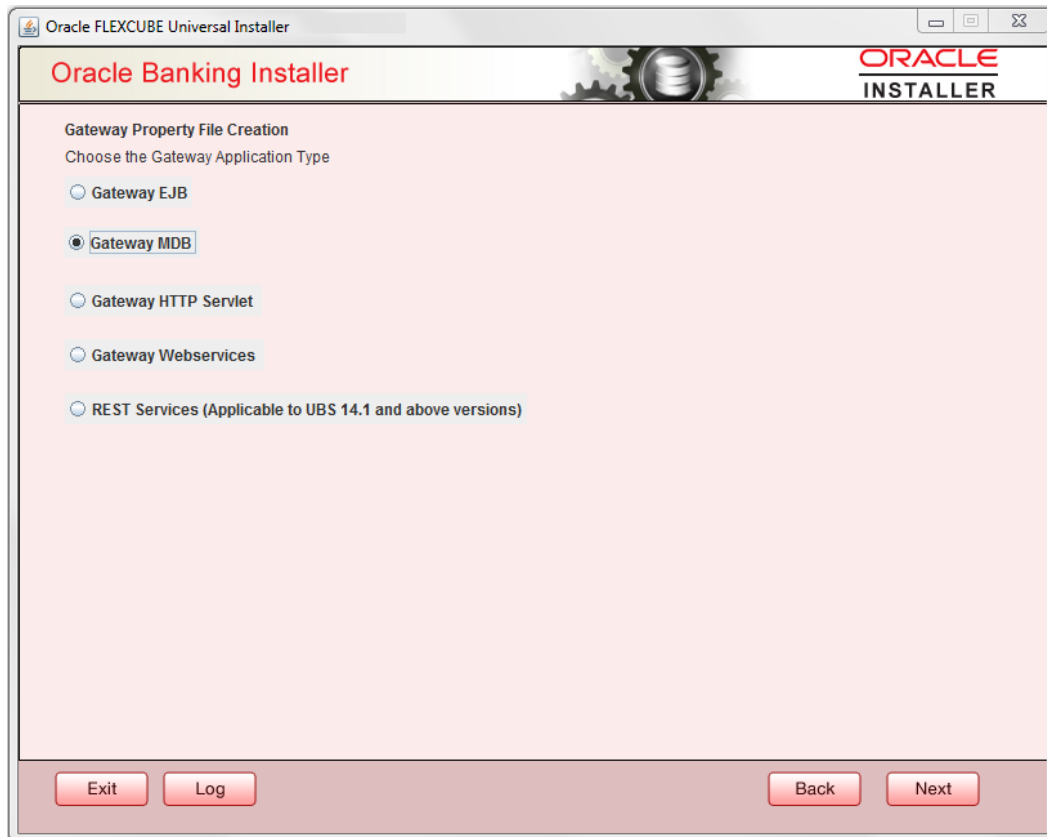
The property file will be created in a temporary folder.

11. Click 'Property File' to view the created property file.
12. Click 'Save' to save the created property file in desired location.

## 1.2.2 Gateway MDB Application

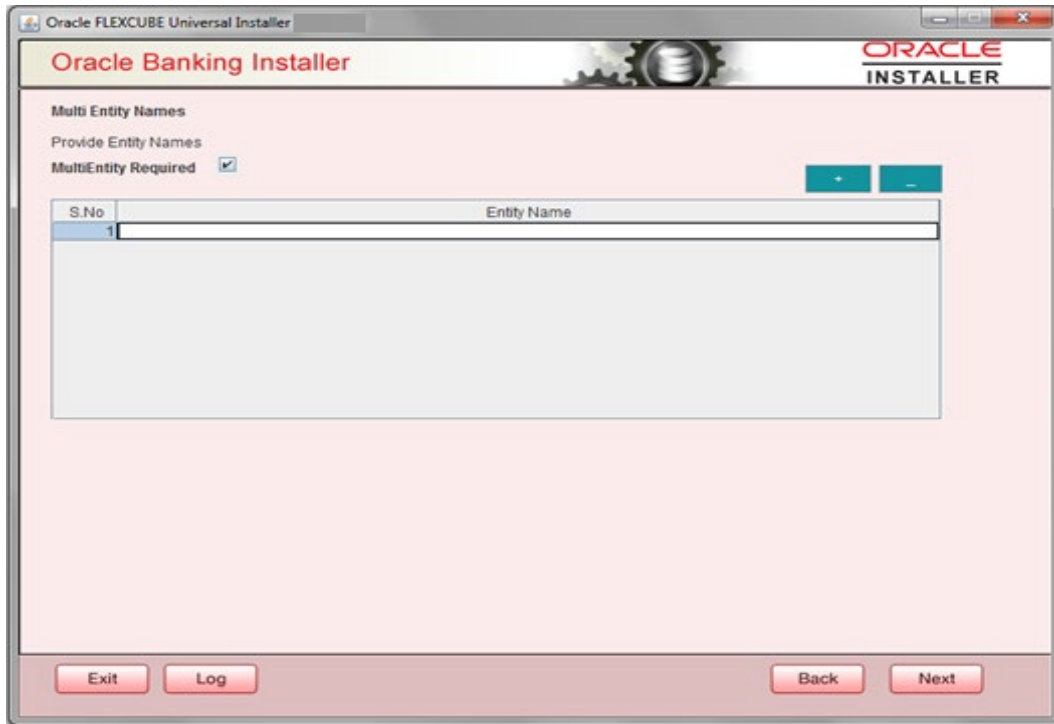
Follow the steps given below:

1. Select 'Gateway MDB' as the application type as shown in the below Screen.



2. Click 'Next'. The following screen is displayed:

The installer displays the 'Multi Entity' screen.



### MultiEntity Required

Select the multi entity check box for enabling the multi entity deployment.

After selecting the multi entity option '+', '-' buttons will be enabled for capturing the entity Name

#### + Button:

New row will be added for capturing new entity name.

#### - Button:

Select the entity name and click – button, deletion of existing entity name will be done

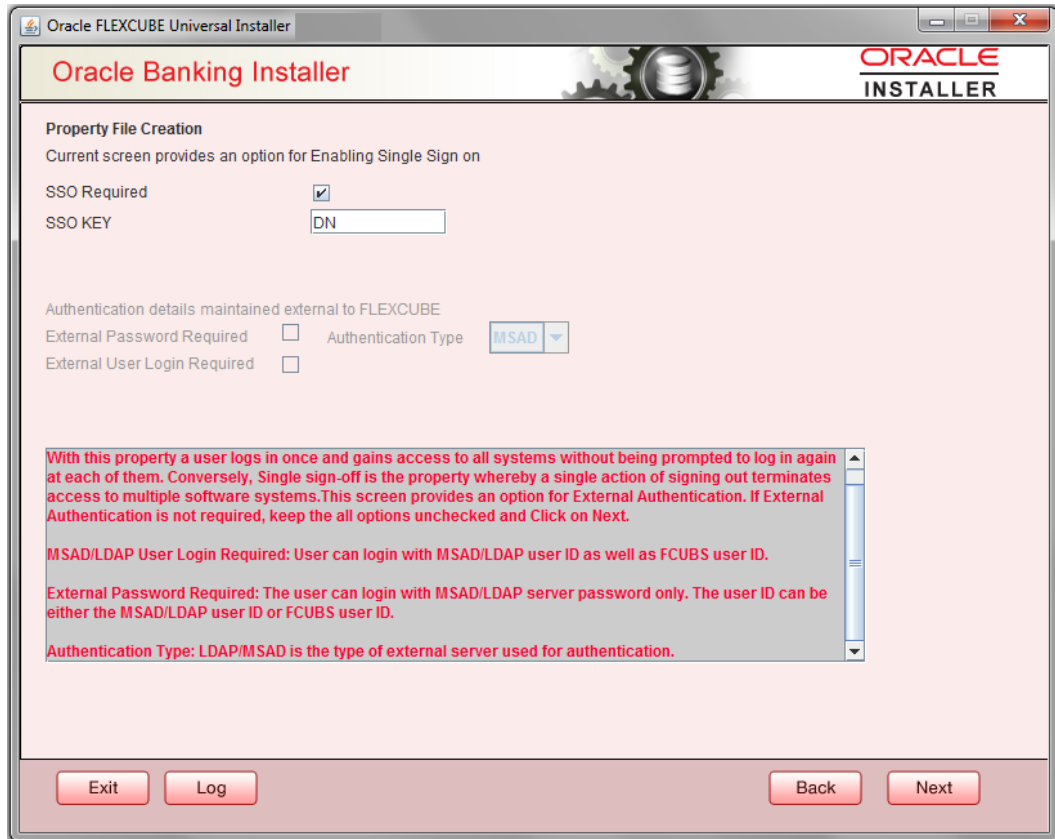
#### Entity Name:

Enter the entity name as single word

For example: ENTITY1

3. Click 'Next'. The following screen is displayed:





4. Specify the following details.

### SSO Required

Check this box to enable single sign-on (SSO). If you check this box, you need to specify the SSO Key.

### SSO Key

Specify the SSO key. If you have checked the box 'SSO Required', it is mandatory to specify the SSO key.

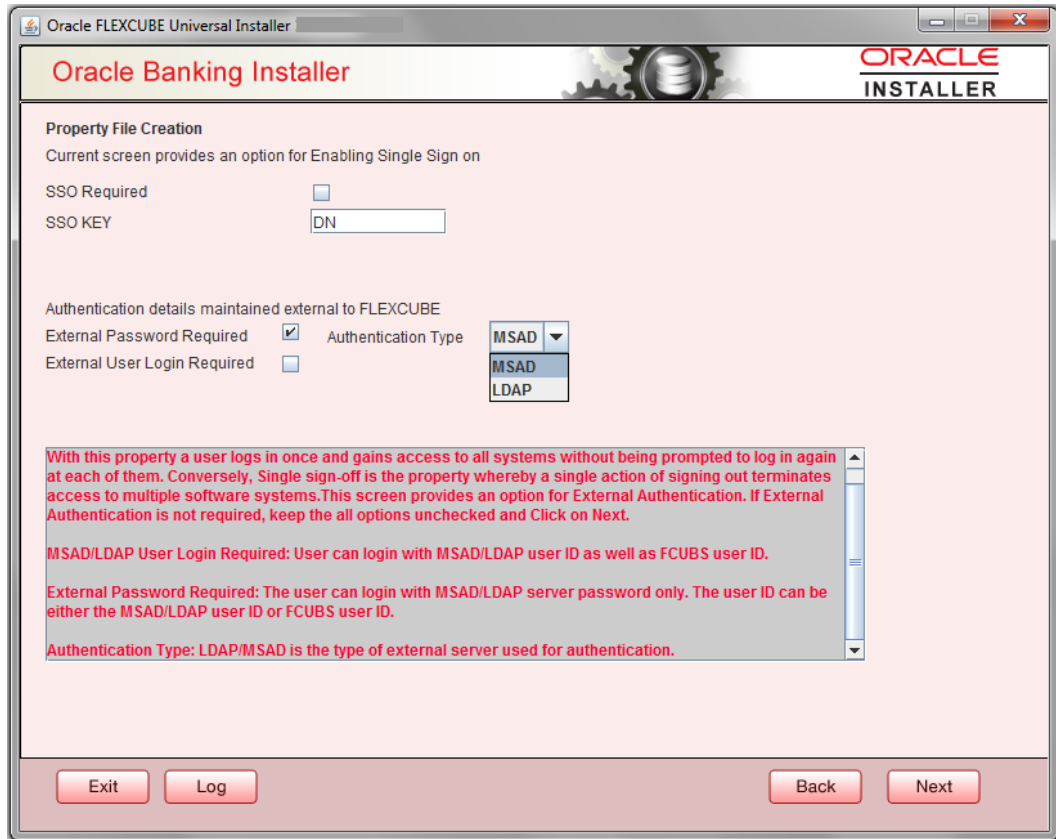
If you have checked the box 'SSO Required', then the Installer will skip the following two screens and will directly navigate to the Modifying the Gateway properties Screen.

### External Password Required

Check this box to allow the user-login using MSAD/LDAP password irrespective of the user ID. If you check this box, the user ID can be either the MSAD/LDAP user ID or the FCUBS user ID. And the password can be MSAD/LDAP server password only.

By default, this check box is unchecked. However, you can change this.

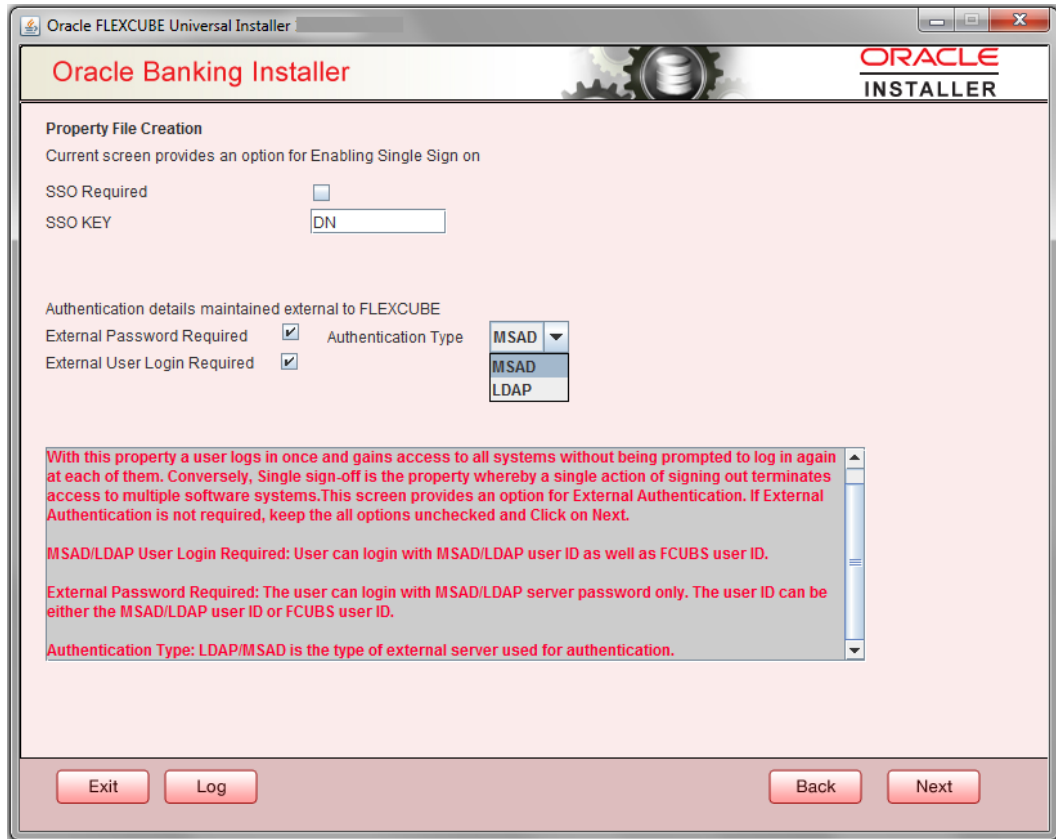
If you do not check this box, the installer skips the following screen and directly navigates you to the Modifying the Gateway Properties Screen.




### External User Login Required

Check this box to enable user login using MSAD/LDAP user ID. If you check this box, the user can login using MSAD/LDAP server user ID as well as using FCUBS user ID. If you do not check this, the user can login using FCUBS user ID only.

By default, this check box is unchecked. However, you can change this.



 The field 'Authentication Type' is enabled if one of the above check boxes is checked:

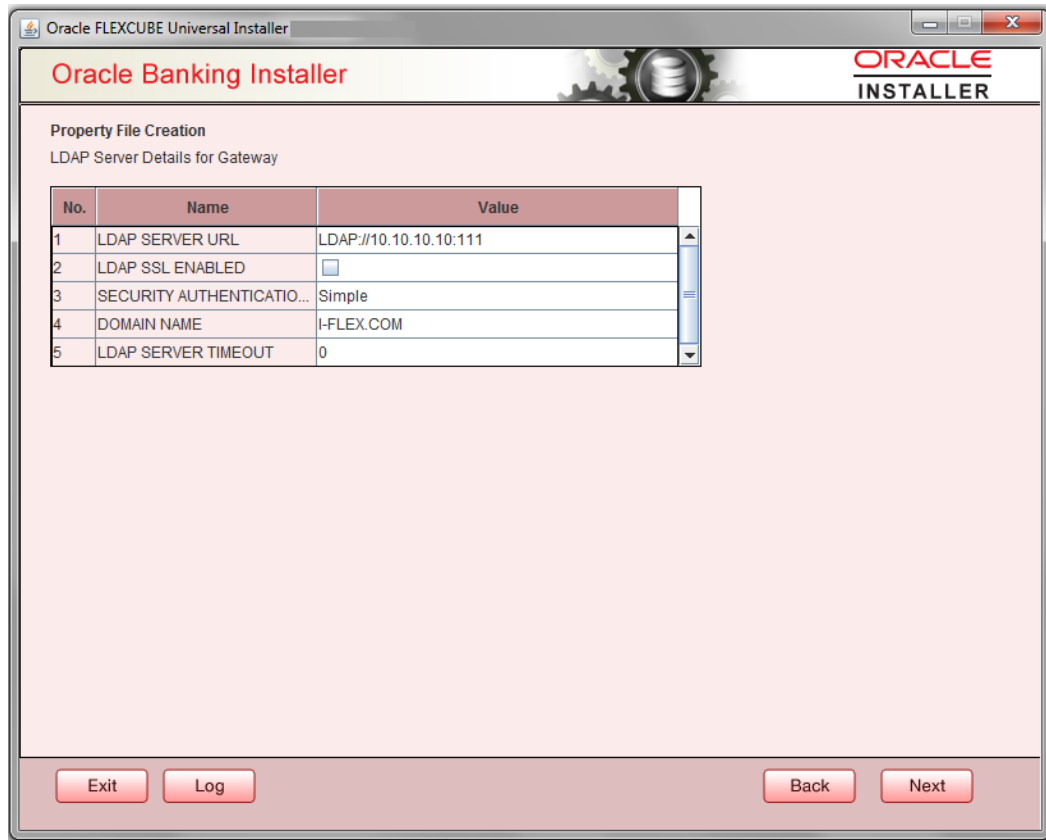
### Authentication Type

Select the authentication type from the adjoining drop-down list. This is the type of external server that is used. You can select one of the following options:

- MSAD (Microsoft Active Directory)
- LDAP (Lightweight Directory Access Protocol)

By default, 'MSAD' is selected; however, you can change it.

- Click 'Next'. The following screen is displayed.



- Specify the following LDAP server details.

### LDAP Server URL

Specify the URL to access the LDAP server where the external user ID and password are maintained.

### LDAP SSL Enabled

Check this box if the LDAP server is SSL enabled. If you check this box, then you need to specify the SSL port also in the field LDAP SERVER URL.

By default, this check box is unchecked. However, you can change this.

### Security Authentication Type

Depending on the authentication mechanism supported by the LDAP server, select one of the following:

- Simple
- Strong



Note the following::

- Different servers support different authentication mechanisms.
- By default, the security authentication type is 'Simple'; however, you can change this.

### Domain Name

Specify the domain name.

### LDAP Server Timeout

Specify the LDAP server timeout in milliseconds. This must be a positive integer value. For example you can specify 1000, 10000 or 5000. If it is zero or less, it indicates that no read timeout is specified. Then the wait for the response infinite until it is received.

By default, the LDAP server timeout is zero; however, you can change this.

6. Click 'Next'. The following screen is displayed:

7. Specify the following details.

### XSD Path

Specify the path to the XSD file. File name is not required. File separator must be '/'. There must be a '/' at the end. All the relevant XSD files must be manually copied to this location.

E.g.:

For Windows: D:\Kernel11.1\GW\_MDB\XSD\

For Linux: /Kernel11.1/GW\_MDB/XSD/

## Logger File

Specify the path to the 'gw\_mdb\_logger.properties' file with the file name. The file must be manually copied to the specified location.

E.g.:

For windows: D:\Kernel11.1\GW\_MDB\config\gw\_mdb\_logger.properties

For Linux: /Kernel11.1/GW\_MDB/config/gw\_mdb\_logger.properties

## Debug Path

Specify the path to the folder where the application creates the logs. There must be a '/' at the end. You need to manually create the folder structure.

E.g.:

For windows: D:\Kernel11.1\GW\_MDB\log\

For Linux: /Kernel11.1/GW\_MDB/log/

## Security Key for Encryption

Specify the security key for the Encryption, here in this case it is 'oraclefinancials'.

## SMS Pool Name

Specify SMS Pool Name, here in this case it is 'jdbc/fcjdevDSSMS'

## DataSource

The JDBC data source is an object bound to JNDI tree and provides database connectivity through a pool of JDBC connections.

## POSS Datasource

Check this box if POSS is required. If you check this box, you need to specify the POSS Datasource Name in the field below this.

## OPSS Available

Indicate whether OPSS-CSF is installed or not.



Please choose this only if Oracle Platform Security Services - Credential Store Framework (CSF) is installed as per the guidelines in the pre-requisite document. It is recommended that you install CSF for safeguarding application specific security credentials.

## Distributed Schema

If the schema is distributed, select 'Yes'.

If the schema is not distributed, select 'No'.

8. Click 'Next'. The following screen is displayed.



9. Specify the following details:

### **Request Queue**

Specify the request queue. This is the point-to-point destination type used for asynchronous peer communication.

E.g.: MDB\_QUEUE

### **Response Queue**

Specify the response queue name.

E.g.: MDB\_QUEUE\_RESPONSE

### **DL Queue**

Specify the dead letter queue name.

E.g.: MDB\_QUEUE\_DLQ

Note: Refer Resources\_To\_Be\_Created.docx for creation of Queues

### **Connection Factory**

Specify the connection configuration parameters to create connections for JMS clients.

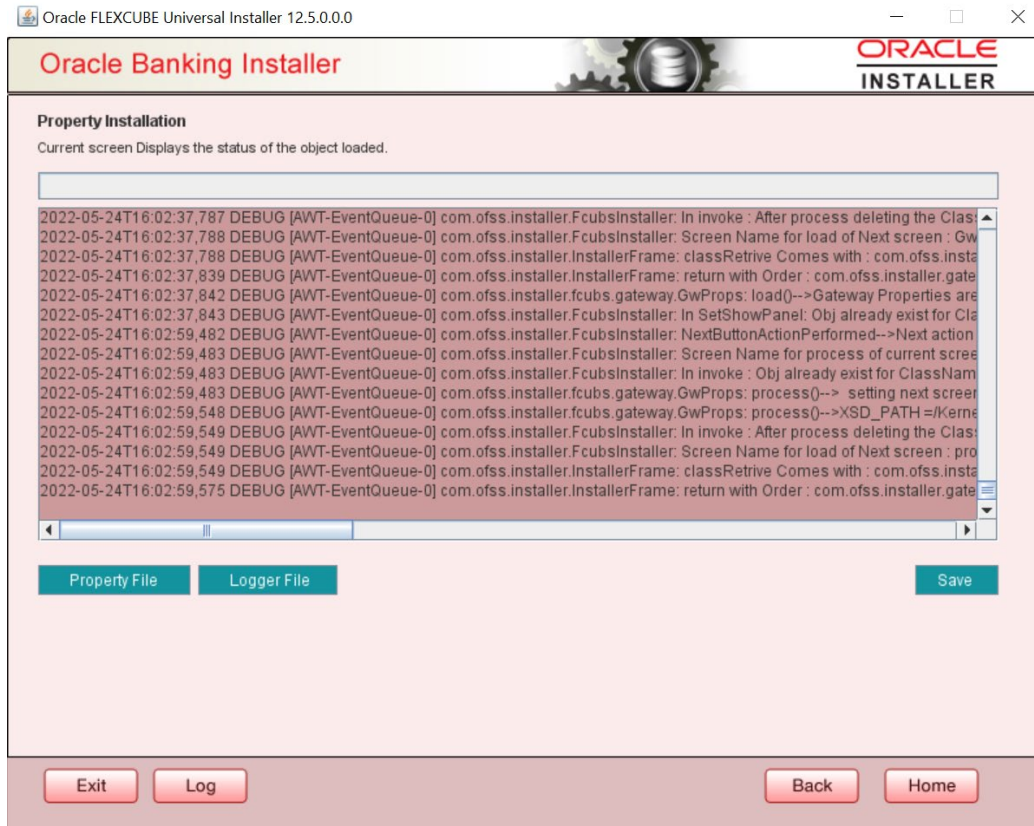
E.g.: MDBQCF.

## Secure Queue

Check this box if the Caller ID and Caller Password values have to be entered.

The Installer creates two files viz. 'gw\_mdb\_logger.properties' and 'GW\_MDB\_Prop.properties' in the path provided to save the files.

10. Click 'Next'. The following screen is displayed.



The property file will be created in a temporary folder.

11. Click 'Property File' to view the created property file.

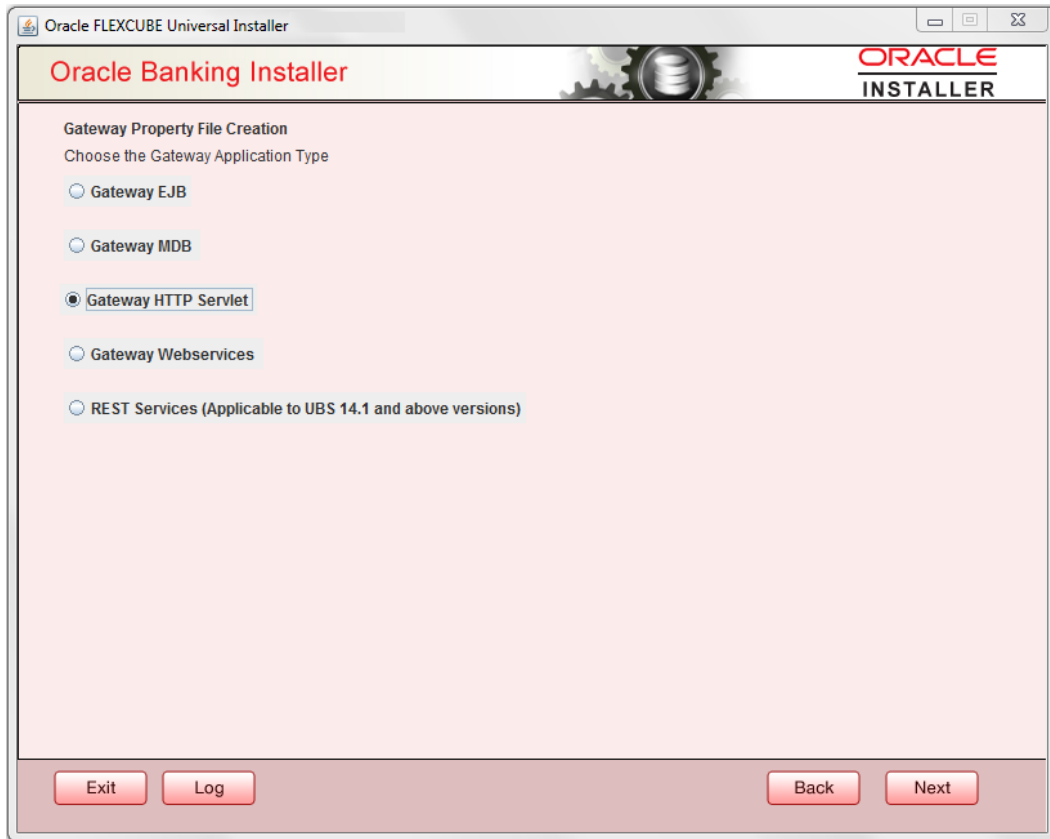
12. Click 'Save' to save the created property file in desired location.

### 1.2.3 Gateway HTTP Servlet Application

Follow the steps given below:

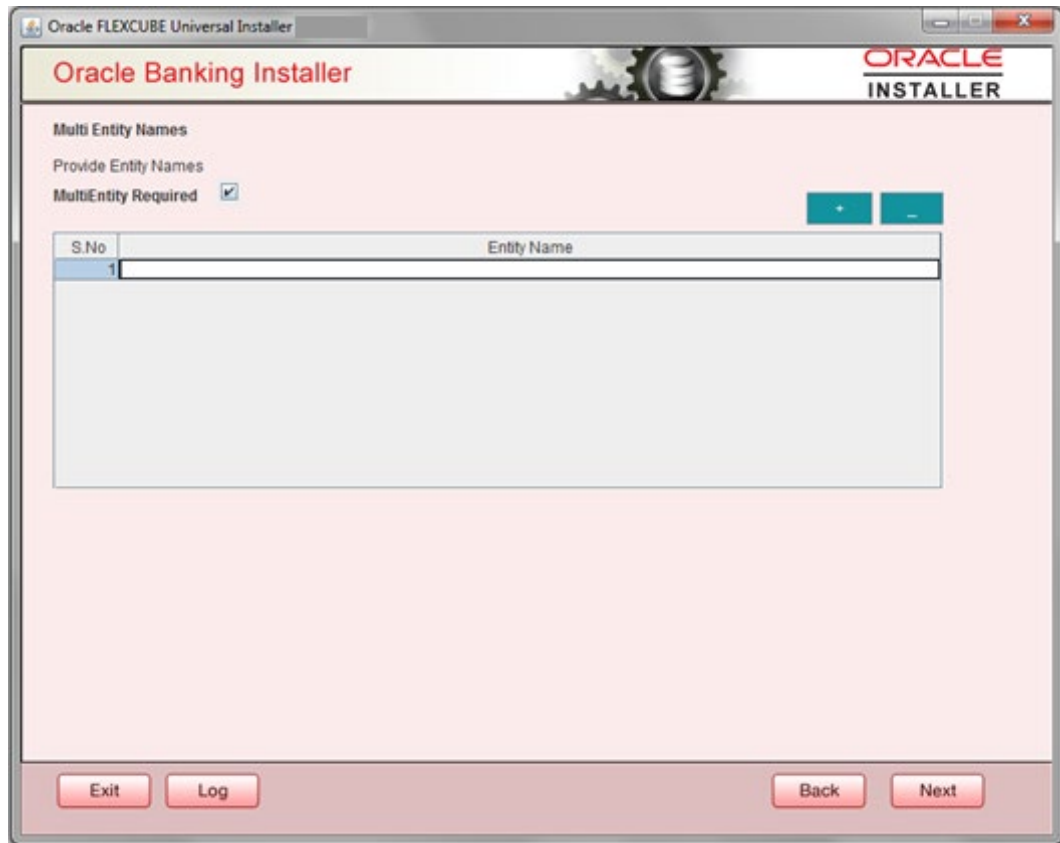
1. Select 'Gateway HTTP Servlet' as the application type as shown in the below Screen.





2. Click 'Next'. The following screen is displayed:

The installer displays the 'Multi Entity' screen



### **MultiEntity Required**

Select the multi entity check box for enabling the multi entity deployment.

After selecting the multi entity option '+', '-' buttons will be enabled for capturing the entity Name

#### **+ Button:**

New row will be added for capturing new entity name.

#### **- Button:**

Select the entity name and click – button, deletion of existing entity name will be done

#### **Entity Name:**

Enter the entity name as single word

For example: ENTITY1

3. Click 'Next'. The following screen is displayed:

**Property File Creation**  
Current screen provides an option for modifying the Gateway Properties

XSD Path: /Kernel11.1/GW\_EJB/XSD/

Logger File: /Kernel11.1/GW\_EJB/config/gw\_ejb\_logger.properties

Debug Path: /Kernel11.1/GW\_EJB/log/

Security Key for Encryption: oraclefinancials

SMS Pool Name: jdbcfcjdevDSSMS

DataSource: FLEXTEST.WORLD

POSS DataSource  OPSS CSF Available

POSS DataSource: POSSTEST.WORLD

Distributed Schema: No

MSG IN log Required: No      MSG OUT log Required: No

Integration with CN Logger

Buttons: Exit, Log, Back, Next

4. Specify the following details.

### XSD Path

Specify the path to the XSD file. File name is not required. File separator must be '/'. There must be a '/' at the end. All the relevant XSD files must be manually copied to this location.

E.g.:

For Windows: D:\Kernel11.1\GW\_HTTP\XSD\

For Linux: /Kernel11.1/GW\_HTTP/XSD/

### Logger File

Specify the path to the 'gw\_http\_logger.properties' file with the file name. The file must be manually copied to the specified location.

E.g.:

For windows: D:\Kernel11.1\GW\_HTTP\config\gw\_http\_logger.properties

For Linux: /Kernel11.1/GW\_HTTP/config/gw\_http\_logger.properties

### Debug Path

Specify the path to the folder where the application creates the logs. There must be a '/' at the end. You need to manually create the folder structure.

E.g.:

For windows: D:\Kernel11.1\GW\_HTTP\log\

For Linux: /Kernel11.1/GW\_HTTP/log/

### **Security Key for Encryption**

Specify the security key for the Encryption, here in this case it is 'oraclefinancials'.

### **SMS Pool Name**

Specify SMS Pool Name, here in this case it is 'jdbc/fcjdevDSSMS'

### **DataSource**

The JDBC data source is an object bound to JNDI tree and provides database connectivity through a pool of JDBC connections.

### **POSS DataSource**

Check this box if POSS is required. If you check this box, you need to specify the POSS DataSource Name in the field below this.

### **OPSS Available**

Indicate whether OPSS-CSF is installed or not.



Please choose this only if Oracle Platform Security Services - Credential Store Framework (CSF) is installed as per the guidelines in the pre-requisite document. It is recommended that you install CSF for safeguarding application specific security credentials.

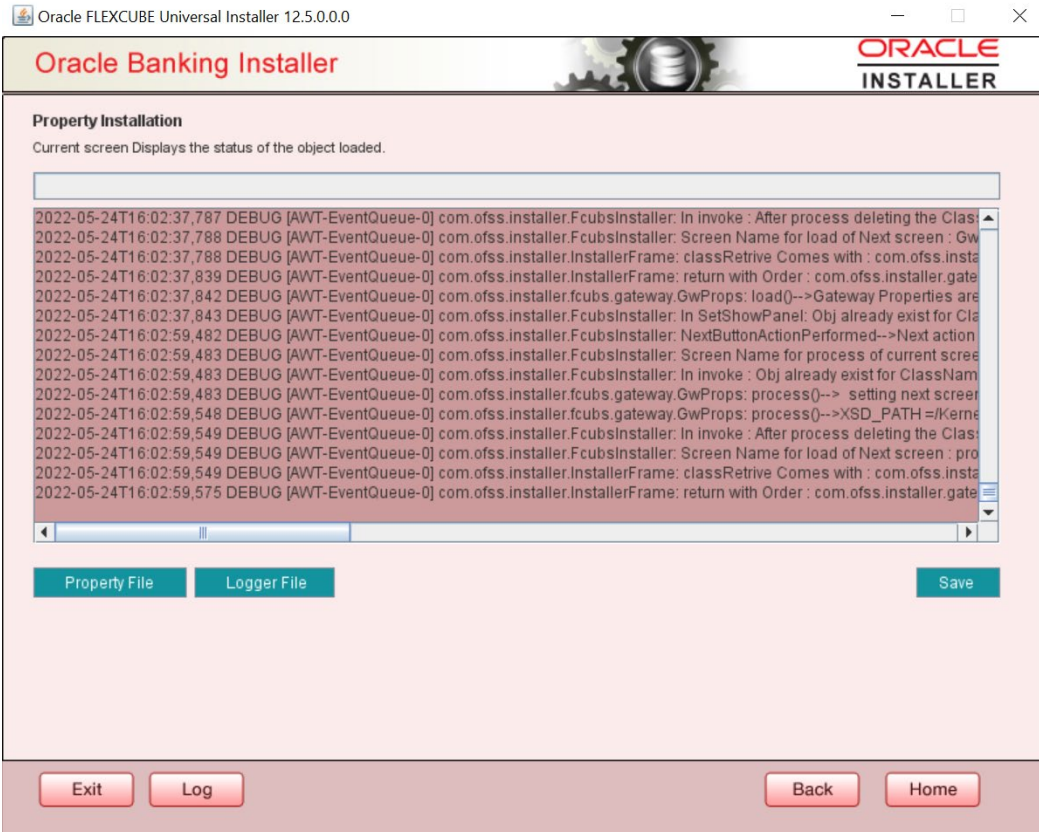
### **Distributed Schema**

If the schema is distributed, select 'Yes'.

If the schema is not distributed, select 'No'.

The Installer creates two files viz. 'gw\_http\_logger.properties' and 'GW\_HTTP\_Prop.properties' in the path provided to save the files.

5. Click 'Next'. The following screen is displayed.



The property file will be created in a temporary folder.

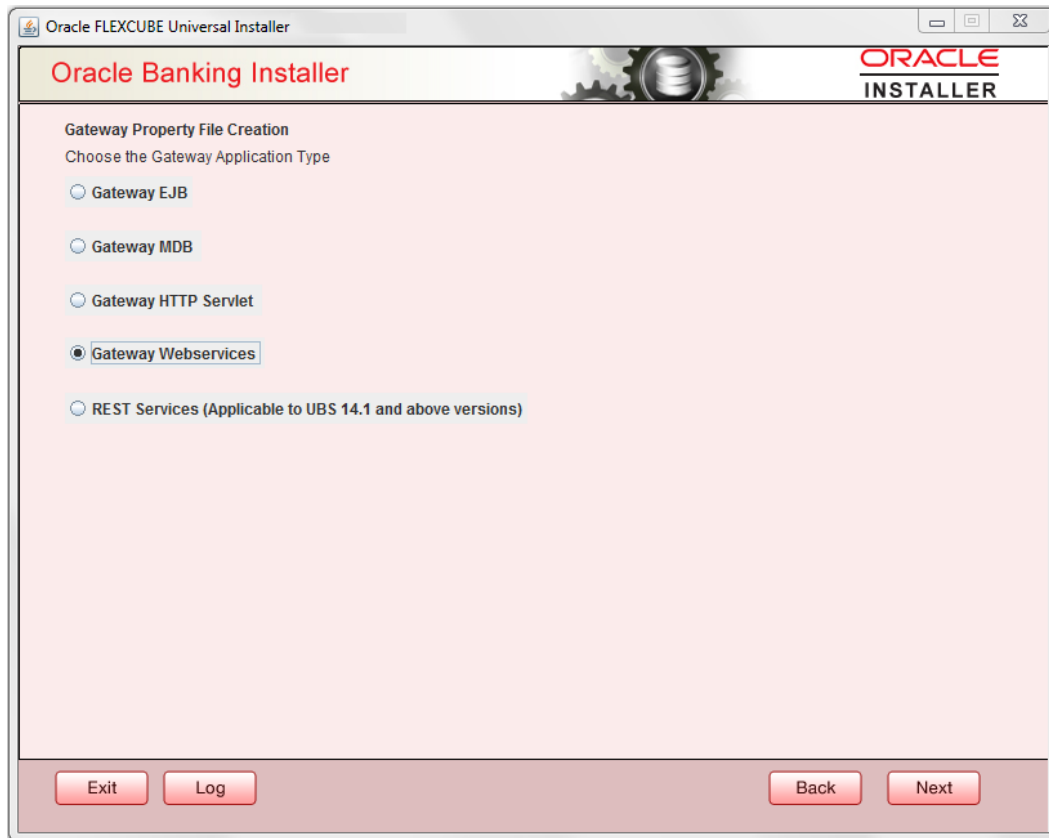
6. Click 'Property File' to view the created property file.
7. Click 'Save' to save the created property file in the desired location.

The property file will be created in the specified folder.

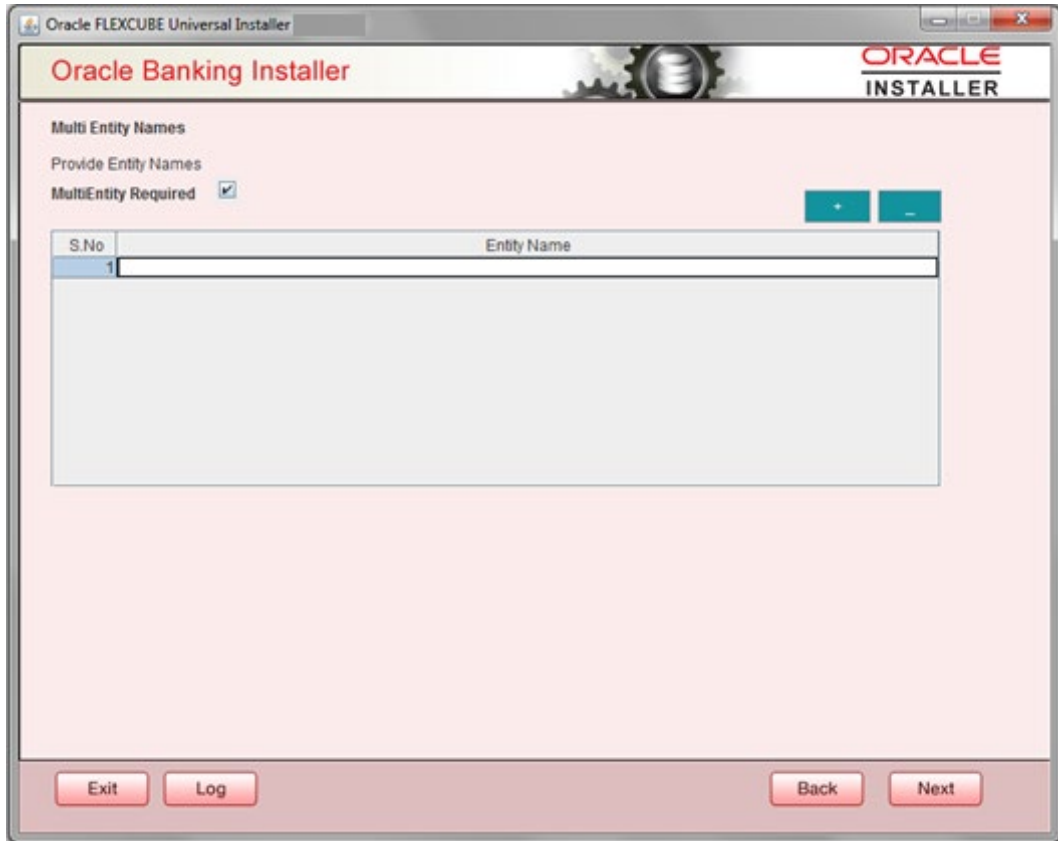
## 1.2.4 Gateway Web Service Application

Follow the steps given below:

1. Select 'Gateway Web Service' as the application type as shown in the below Screen.



2. Click 'Next'. The following screen is displayed.  
The installer displays the 'Multi Entity' screen.



### **MultiEntity Required**

Select the multi entity check box for enabling the multi entity deployment.

After selecting the multi entity option '+', '-' buttons will be enabled for capturing the entity Name

#### **+ Button:**

New row will be added for capturing new entity name.

#### **- Button:**

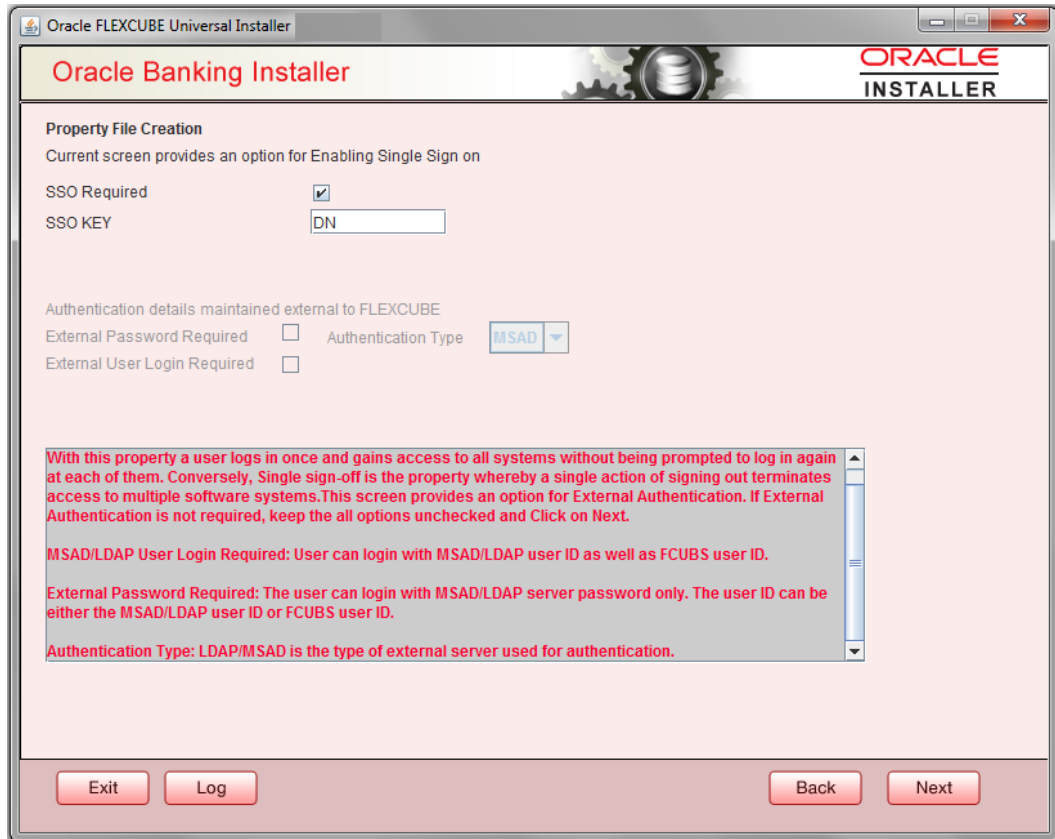
Select the entity name and click – button, deletion of existing entity name will be done

#### **Entity Name:**

Enter the entity name as single word

For example: ENTITY1

3. Click 'Next'. The following screen is displayed:



4. Specify the following details.

### SSO Required

Check this box to enable single sign-on (SSO). If you check this box, you need to specify the SSO Key.

### SSO Key


Specify the SSO key. If you have checked the box 'SSO Required', it is mandatory to specify the SSO key.

If you have checked the box 'SSO Required', then the Installer will skip the following two screens and will directly navigate to the SSL screen shown below in this manual.

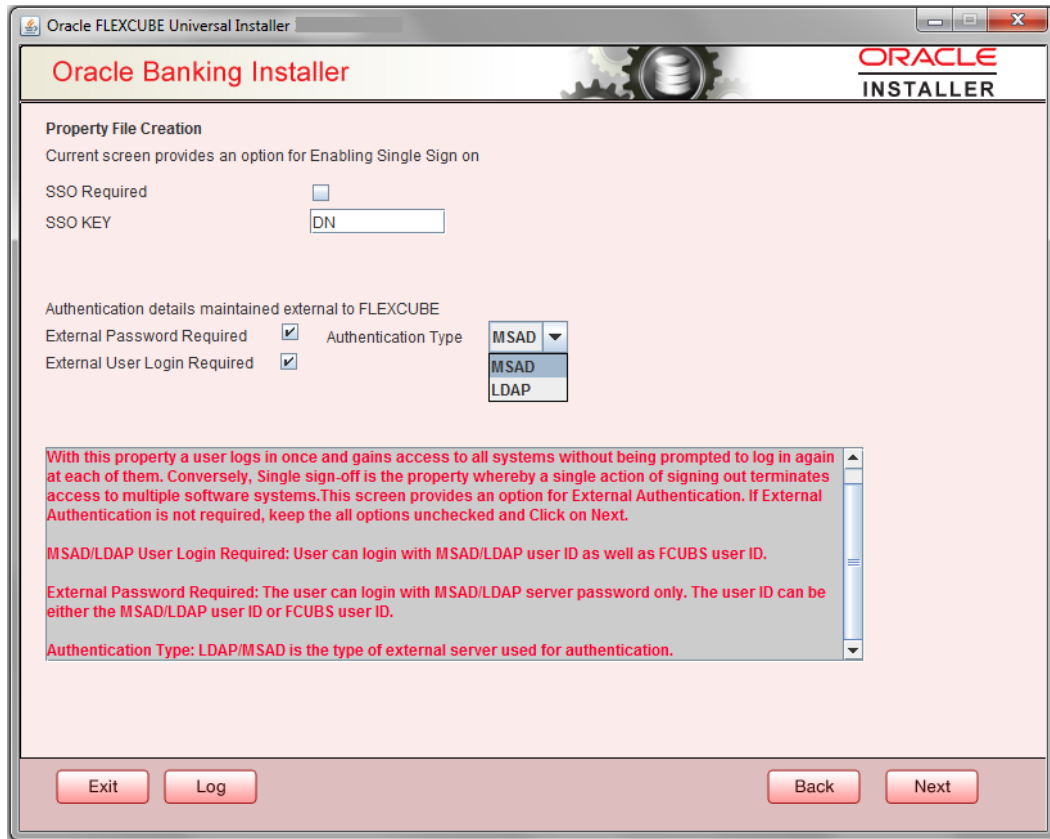
If you have not checked the box 'SSO Required', then click 'Next'. The following screen is displayed.

### External User Login Required

Check this box to enable user login using MSAD/LDAP user Id.

 If you check this box, the user can login with MSAD/LDAP server user Id as well as FCUBS user Id. If you do not check this box, the user can login using FCUBS user Id only.





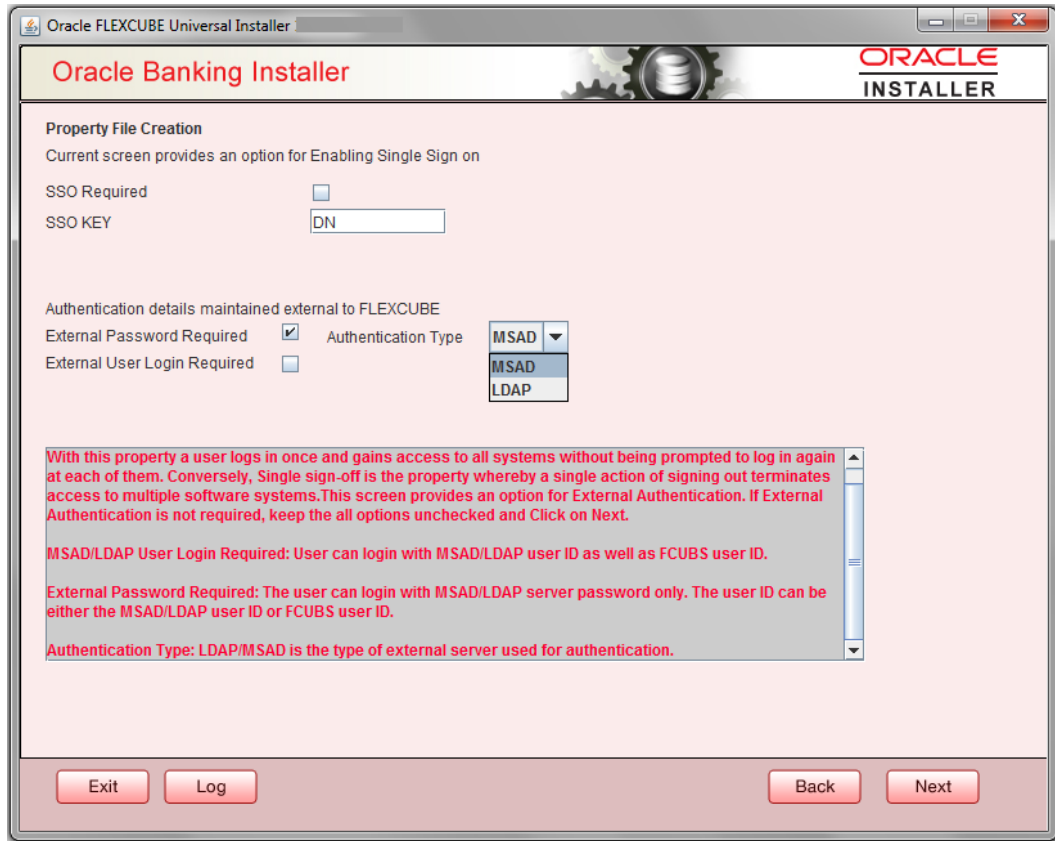
### External Password Required

Check this box to allow user login using MSAD/LDAP password irrespective of the user Id.

**STOP** If you check this box, the user can login using MSAD/LDAP server password only. The user Id can be one of the following:

- MSAD/LDAP user Id
- FCUBS user Id

If you do not check this box, then the installer skips the following screen and directly navigates to the Modifying Gateway Properties screen.



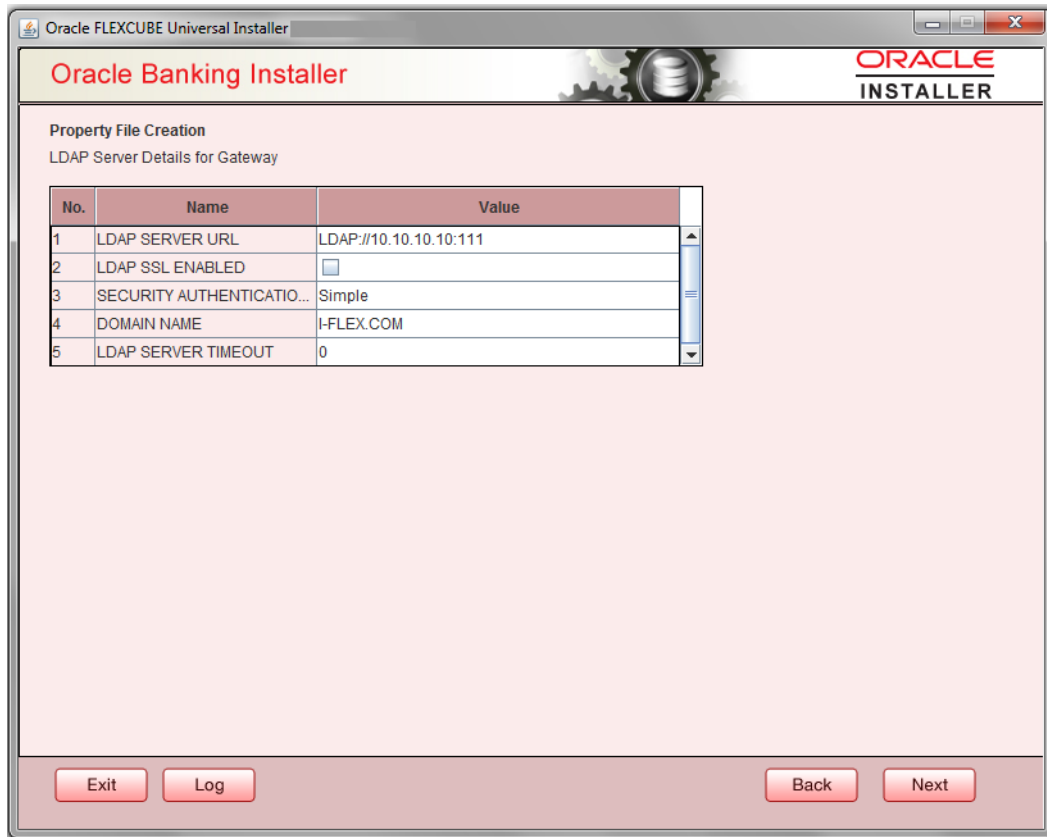
## Authentication Type

Select the authentication type. This is the type of external server that is used. You can select one of the following options:

- MSAD (Microsoft Active Directory)
- LDAP (Lightweight Directory Access Protocol)

The default option is MSAD; however, you can change it

5. If you check the box, then the installer navigates to the following screen on clicking 'Next' button.



6. Specify the following LDAP server details.

### LDAP Server URL

Specify the URL to access the LDAP server where the external user ID and password are maintained.

### LDAP SSL Enabled

Check this box if the LDAP server is SSL enabled. If you check this box, then you need to specify the SSL port also in the field LDAP SERVER URL.

By default, this check box is unchecked. However, you can change this.

### Security Authentication Type

Depending on the authentication mechanism supported by the LDAP server, select one of the following:

- Simple
- Strong



Note the following:

- Different servers support different authentication mechanisms.
- By default, the security authentication type is 'Simple'; however, you can change this.

## Domain Name

Specify the domain name.

## LDAP Server Timeout

Specify the LDAP server timeout in milliseconds. This must be a positive integer value. For example you can specify 1000, 10000 or 5000. If it is zero or less, it indicates that no read timeout is specified. Then the wait for the response infinite until it is received.

By default, the LDAP server timeout is zero; however, you can change this.

7. Click 'Next'. The following screen is displayed:

The screenshot shows the 'Oracle Banking Installer' window with the 'Property File Creation' section. The text below the title bar reads: 'Current screen provides an option for modifying the Gateway Properties'. The form contains the following fields and options:

XSD Path	<input type="text" value="/Kernel11.1/GW_EJB/XSD/"/>
Logger File	<input type="text" value="/Kernel11.1/GW_EJB/config/gw_ejb_logger.properties"/>
Debug Path	<input type="text" value="/Kernel11.1/GW_EJB/log/"/>
Security Key for Encryption	<input type="text" value="oraclefinancials"/>
SMS Pool Name	<input type="text" value="idbc/cjdevDSSMS"/>
DataSource	<input type="text" value="FLEXTTEST.WORLD"/>
	<input type="checkbox"/> POSS DataSource <input checked="" type="checkbox"/> OPSS CSF Available
POSS DataSource	<input type="text" value="POSSTTEST.WORLD"/>
Distributed Schema	<input type="button" value="No"/> ▼
MSG IN log Required	<input type="button" value="No"/> ▼
MSG OUT log Required	<input type="button" value="No"/> ▼
	<input type="checkbox"/> Integration with CN Logger

At the bottom of the window, there are four buttons: 'Exit', 'Log', 'Back', and 'Next'.

8. Specify the following details.

### XSD Path

Specify the path to the XSD file. File name is not required. File separator must be '/'. There must be a '/' at the end. All the relevant XSD files must be manually copied to this location.

E.g.:

For Windows: D:\Kernel11.1\GW\_WS\XSD\

For Linux: /Kernel11.1/GW\_WS/XSD/

## Logger File

Specify the path to the 'gw\_ws\_logger.properties' file with the file name. The file must be manually copied to the specified location.

E.g.:

For windows: D:\Kernel11.1\GW\_WS\config\gw\_ws\_logger.properties

For Linux: /Kernel11.1/GW\_WS/config/gw\_ws\_logger.properties

## Debug Path

Specify the path to the folder where the application creates the logs. There must be a '/' at the end. You need to manually create the folder structure.

E.g.:

For windows: D:\Kernel11.1\GW\_WS\log\

For Linux: /Kernel11.1/GW\_WS/log/

## Security Key for Encryption

Specify the security key for the Encryption, here in this case it is 'oraclefinancials'.

## SMS Pool Name

Specify SMS Pool Name, here in this case it is 'jdbc/fcjdevDSSMS'

## DataSource

The JDBC data source is an object bound to JNDI tree and provides database connectivity through a pool of JDBC connections.

## POSS DataSource

Check this box if POSS is required. If you check this box, you need to specify the POSS DataSource Name in the field below this.

## OPSS CSF Available

Indicate whether OPSS-CSF is installed or not.



Please choose this only if Oracle Platform Security Services - Credential Store Framework (CSF) is installed as per the guidelines in the pre-requisite document. It is recommended that you install CSF for safeguarding application specific security credentials.

## Distributed Schema

If the schema is distributed, select 'Yes'.

If the schema is not distributed, select 'No'.

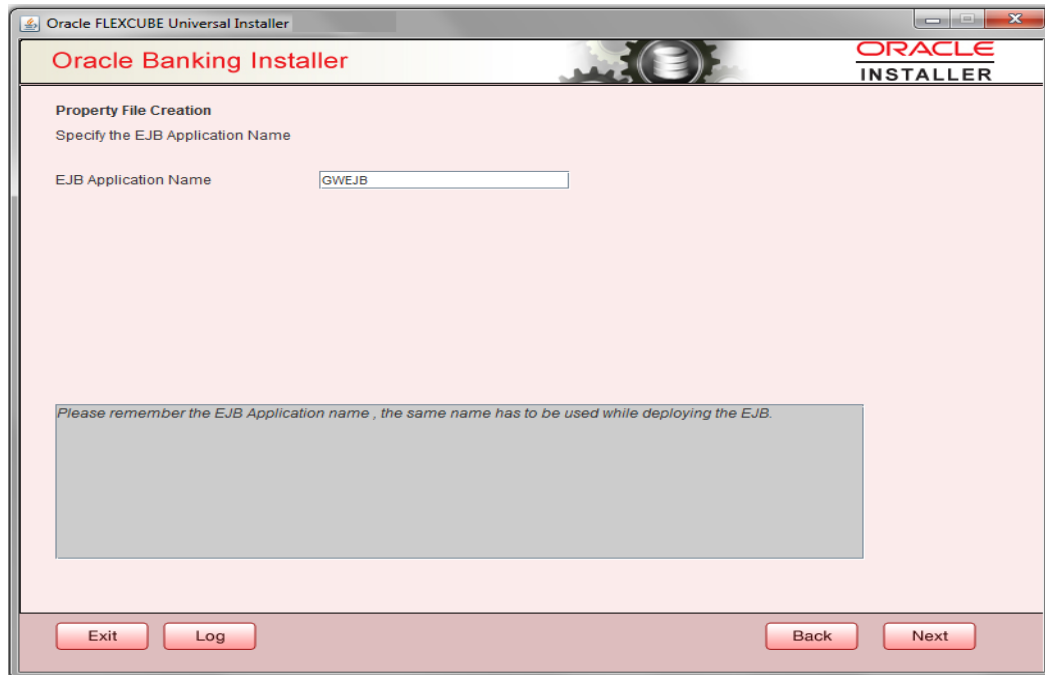
## MSG IN LOG Required

Choose Yes/No from drop down box

### **MSG OUT LOG Required**

Choose Yes/No from drop down box.

9. Click 'Next'. The following screen is displayed.



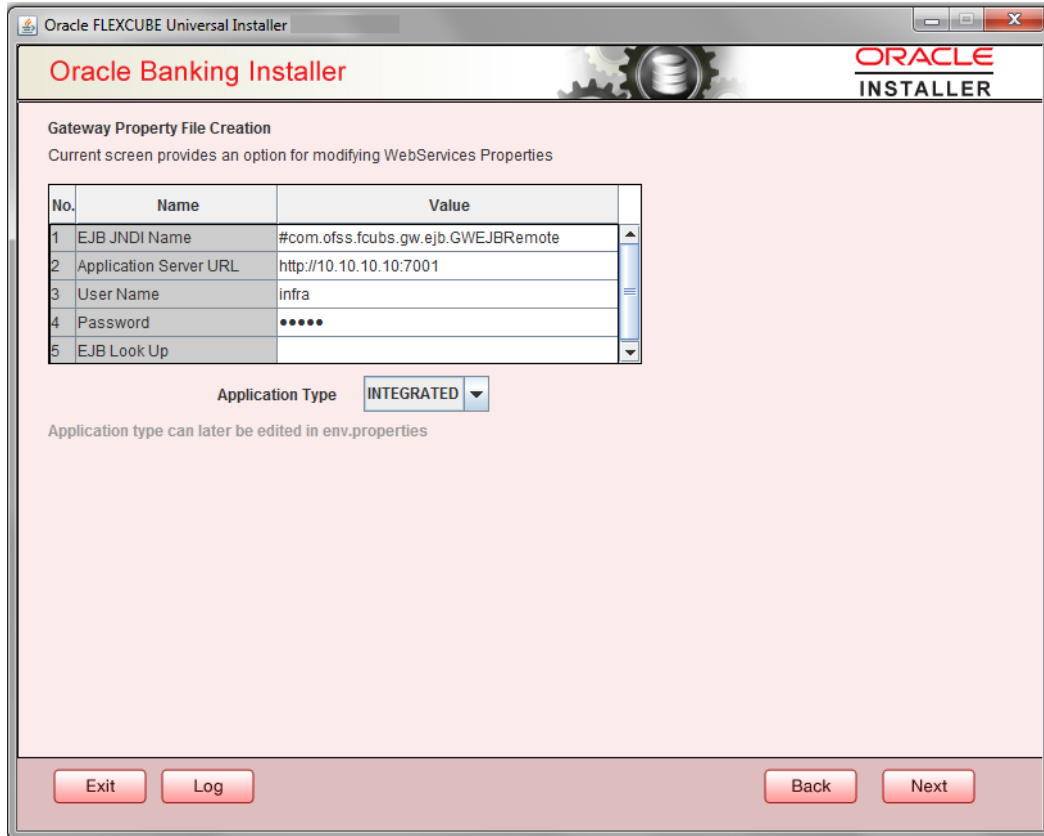
10. Specify the following details:

### **EJB Application Name**

Specify the name of the EJB application deployed.

E.g.: GWEJB.

11. Click 'Next'. The following screen is displayed.



12. Specify the following details:

### EJB JNDI Name

If you build the EJB application with GWEJB name, this will create the name with which the EJB EAR file is built.

If you select EJB Call Type as REMOTE, this will create  
'<EJB\_APPLICATION\_NAME>#com.ofss.fcubs.gw.ejb.GWEJBRemote. in  
'GW\_WS\_Prop.properties' file

E.g.:

Weblogic/: GWEJB #com.ofss.fcubs.gw.ejb.GWEJBRemote

### Application Server URL

Specify the URL of the application server where the webservice application is hosted.

E.g.:

Weblogic: [t3://10.10.10.10:7001](http://10.10.10.10:7001)

### User Name

Specify the user name to access the application server where the EJB application is deployed.

E.g.: infra

## Password

Specify the password for the above user name.

13. Specify the EJB look up type from the drop down list. The options are LOCAL/REMOTE

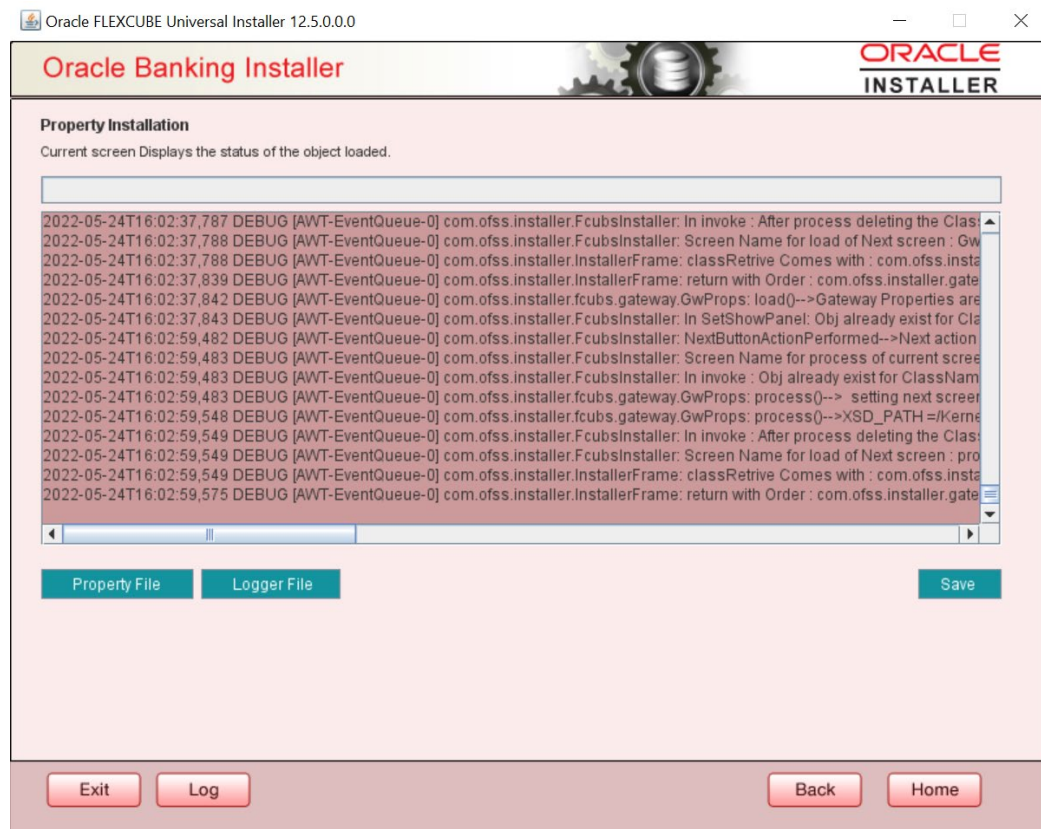
14. Specify the Application Type from the drop down list.

**STOP** If the Application type is 'INTEGRATED' then the EJB look up type should be select as 'LOCAL'

**STOP** If the Application type is 'INDIVIDUAL' then the EJB look up type should be select as 'REMOTE' and EJB should configure in any server. ('REMOTE' only works with combination of EJB & GWWS )

**STOP** The Installer creates two files viz. 'gw\_ws\_logger.properties' and 'GW\_WS\_Prop.properties' in the path provided to save the files.

15. Click 'Next'. The following screen is displayed.



The property file will be created in a temporary folder.

16. Click 'Property File' to view the created property file.

17. Click 'Save' to save the created property file in the desired location.

The property file will be created in a temporary folder.



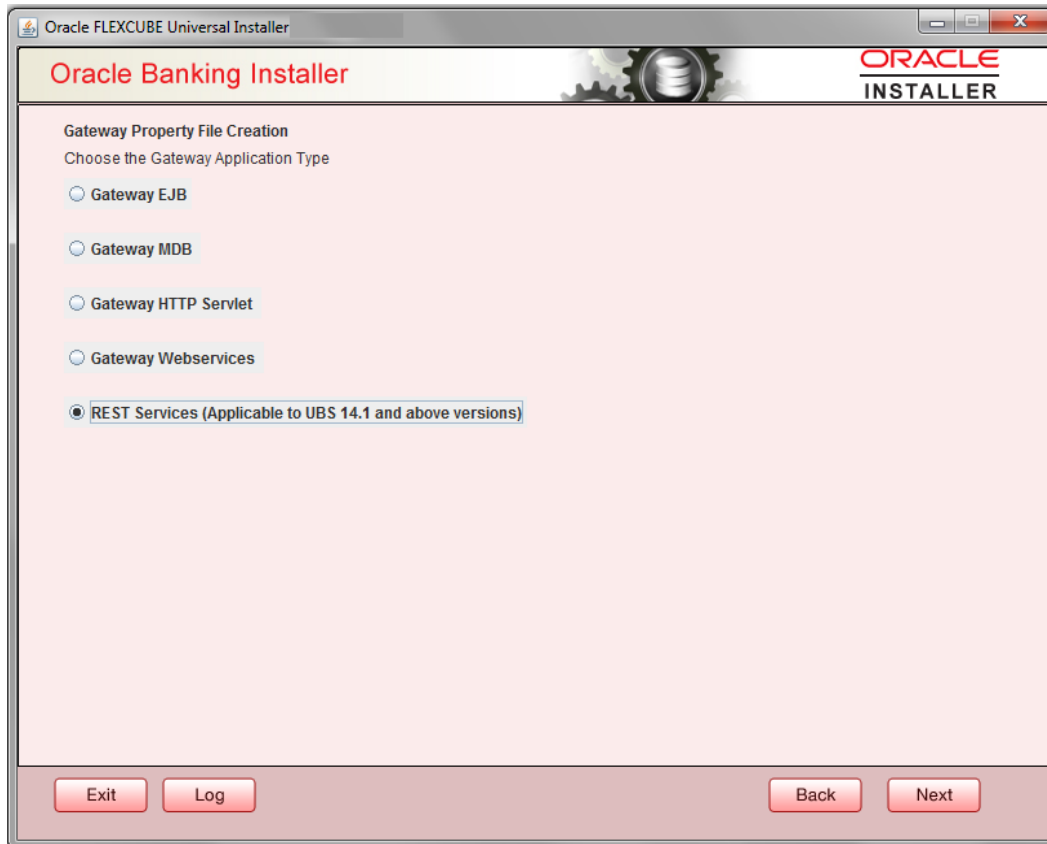


For Gateway EAR Building refer 'FCUBS\_EAR\_Building.docx'

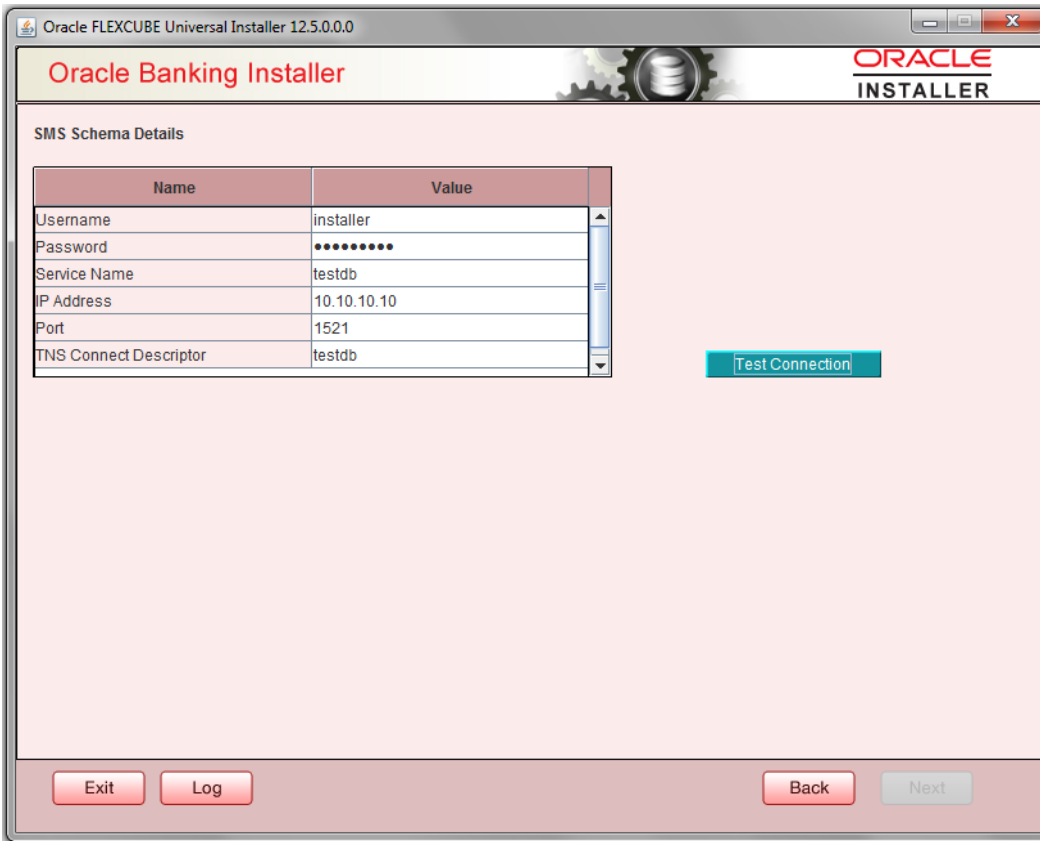
## 1.2.5 REST Services Application

Follow the steps given below:

1. Select 'Gateway Web Service' as the application type as shown in the below Screen.



2. Click 'Next'. The following screen is displayed to capture Schema details. Enter valid username, password, IP Address, port and TNS descriptor and click on "Test Connection" button.



3. Successful test connection will enable Next button. Click on it o proceed to next page.

4. In above page, enter the below REST EJB details:

**REST EJB Logger File**

Enter logger property file path.

**REST EJB Debug Path**

Enter path where debugs are to be written.

**REST EJB Security Key for Encryption**

Specify the security key for the Encryption. In this case it is 'oraclefinancials'.

**REST EJB Msg Schema Pool Name**

Enter valid pool name. by default it is : jdbc/fcjdevDSSMS

**MSG IN LOG Required**

Choose Yes/No from drop down box.

**MSG OUT LOG Required**

Choose Yes/No from drop down box.

5. Click on Next Button to enter REST Services information.

The screenshot shows the Oracle Banking Installer window with the following configuration details:

REST Services Properties	
REST Services Logger File	/Kernel11.1/RESTServices/config/gw_rest_logger.properties
REST Services Debug Path	/Kernel11.1/RESTServices/log/
REST Services Security Key for Encryption	oraclefinancials
REST Services Msg Schema Pool Name	jdbc/fcjdevDSSMS
Authentication Scheme	FLEXCUBE
Deployment Type	INDIVIDUAL
REST Client ID	oracle
REST Client Secret	CustomerServer
Access Token URL	http://10.184.132.161:14100/ms_oauth/oauth2/endpoints/oauthservice/tokens
Swagger Host	10.10.10.10:1010
Swagger Version	14.1
REST EJB Details	
CTX Factory	weblogic.jndi.WLInitialContextFactory
Provider URL	3://10.10.10.10:1010
Security Principal	weblogic
Security Credentials	*****
JNDI Name	GWRestEJB#com.ofss.fcc.gw.rest.GWRestRemote

Buttons at the bottom: Exit, Log, Back, Next.

This Screen captures below properties:

### REST Services Logger File

Enter logger property file path.

### REST Services Debug Path

Enter path where debugs are to be written.

### REST Services Security Key for Encryption

Specify the security key for the Encryption. In this case it is 'oraclefinancials'.

### REST Services Msg Schema Pool Name

Enter valid pool name. by default it is : jdbc/fcjdevDSSMS

### Authentication Scheme:

OAUTH and FLEXCUBE are two types of Authentication Schemes available.

Please note, for FLEXCUBE authentication Scheme, REST Client ID, REST Client Secret, Access Token URL are disabled.

The same has to be entered if AOUTH is selected.

## CTX factory

Provide valid CTX factory information.

## Provider URL

Enter URL with valid port number.

## Security Principal

Provide Security principal username.

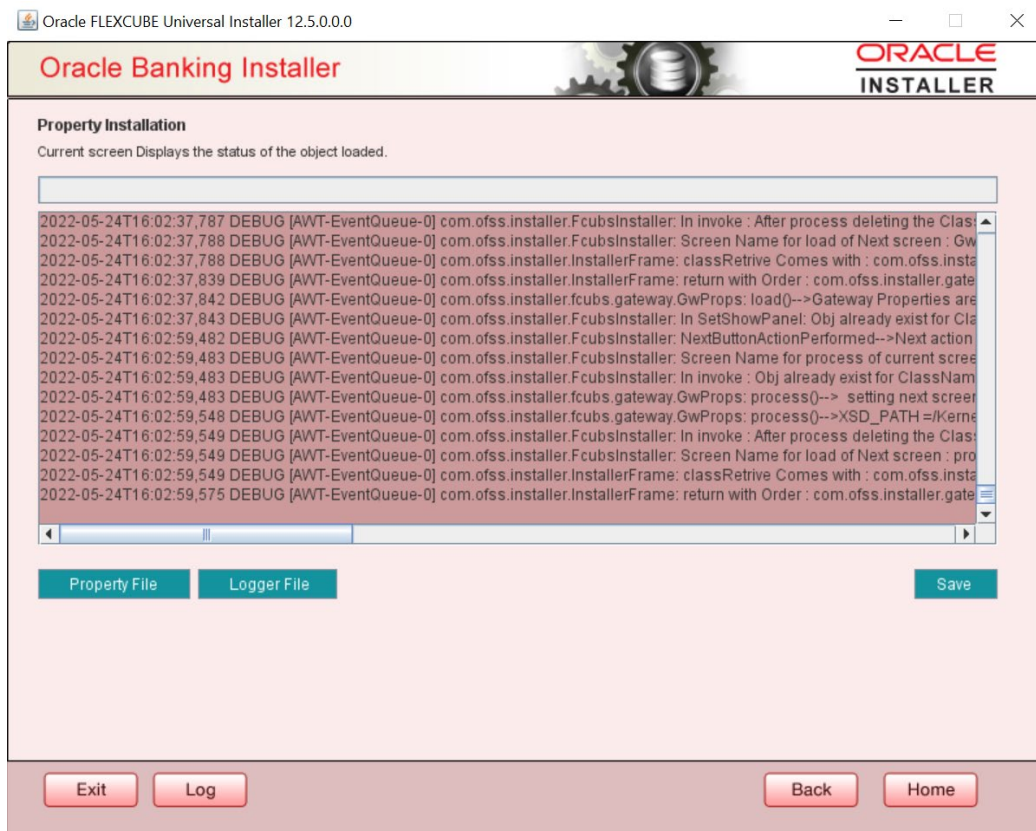
## Security Credentials

Provide Security principal password.

## JNDI Name

JNDI Name will be defaulted based on application server selected.

6. Click on Next button.



7. Click 'Property File' to view the created property file.
8. Click 'Save' to save the created property file in the desired location.

The property file will be created in a temporary folder



GATEWAY Property File Creation  
[May] [2022]  
Version 14.6.0.0.0

Oracle Financial Services Software Limited  
Oracle Park  
Off Western Express Highway  
Goregaon (East)  
Mumbai, Maharashtra 400 063  
India

Worldwide Inquiries:  
Phone: +91 22 6718 3000  
Fax: +91 22 6718 3001  
<https://www.oracle.com/industries/financial-services/index.html>

Copyright © [2007], [2022], Oracle and/or its affiliates. All rights reserved.

Oracle and Java are registered trademarks of Oracle and/or its affiliates. Other names may be trademarks of their respective owners.

**U.S. GOVERNMENT END USERS:** Oracle programs, including any operating system, integrated software, any programs installed on the hardware, and/or documentation, delivered to U.S. Government end users are "commercial computer software" pursuant to the applicable Federal Acquisition Regulation and agency-specific supplemental regulations. As such, use, duplication, disclosure, modification, and adaptation of the programs, including any operating system, integrated software, any programs installed on the hardware, and/or documentation, shall be subject to license terms and license restrictions applicable to the programs. No other rights are granted to the U.S. Government.

This software or hardware is developed for general use in a variety of information management applications. It is not developed or intended for use in any inherently dangerous applications, including applications that may create a risk of personal injury. If you use this software or hardware in dangerous applications, then you shall be responsible to take all appropriate failsafe, backup, redundancy, and other measures to ensure its safe use. Oracle Corporation and its affiliates disclaim any liability for any damages caused by use of this software or hardware in dangerous applications.

This software and related documentation are provided under a license agreement containing restrictions on use and disclosure and are protected by intellectual property laws. Except as expressly permitted in your license agreement or allowed by law, you may not use, copy, reproduce, translate, broadcast, modify, license, transmit, distribute, exhibit, perform, publish or display any part, in any form, or by any means. Reverse engineering, disassembly, or decompilation of this software, unless required by law for interoperability, is prohibited.

The information contained herein is subject to change without notice and is not warranted to be error-free. If you find any errors, please report them to us in writing.

This software or hardware and documentation may provide access to or information on content, products and services from third parties. Oracle Corporation and its affiliates are not responsible for and expressly disclaim all warranties of any kind with respect to third-party content, products, and services. Oracle Corporation and its affiliates will not be responsible for any loss, costs, or damages incurred due to your access to or use of third-party content, products, or services.